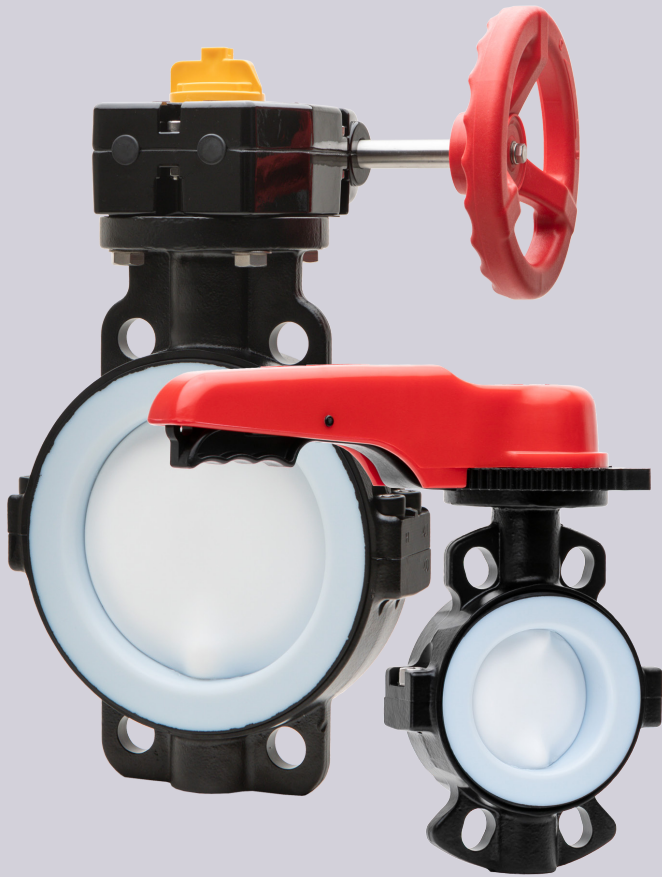


Type-55 IS Butterfly Valve Data Sheet



FEATURES:

- Face-to-face dimensions match ISO 5752 short pattern metal valve standards
- Durable powder-coated cast ductile iron body provides long-lasting structural integrity and corrosion resistance.
- Thin yet strong, high-Cv disc design maximizes flow capacity without compromising strength
- Bubble-tight shut-off delivers Class VI leakage protection for leak-free performance
- All wetted components (disc and seat) are PTFE for superior chemical resistance and durability
- Non-wetted stainless steel stem fully engaged through the body and disc
- Standardized ISO 5211 mounting pad interface for easy actuator integration and automation
- Lever handle includes 19-position throttling plate with lockout provision
- Plasgear™ operator includes engineered resin enclosure with stainless steel trim

OPTIONS:

- Pneumatic and electric actuators and accessories
- Stem extensions
- 2" square operating nut
- Chain operators (Plasgear™ types)
- Manual limit switch (lever or Plasgear™)
- Speed Handle™ for Plasgear™ operator

PRESSURE VS. TEMPERATURE (PSI, WATER, NON-SHOCK)*:

Temperature (F)	inches (mm)										
	2" (50)	2-1/2" (65)	3" (80)	4" (100)	5" (125)	6" (150)	8" (200)	10" (250)	12" (300)	14" (350)	16" (400)
-5° - 210°	150	150	150	150	150	150	150	150	150	100	100

WEIGHTS (LBS.):

Operator	inches (mm)										
	2" (50)	2-1/2" (65)	3" (80)	4" (100)	5" (125)	6" (150)	8" (200)	10" (250)	12" (300)	14" (350)	16" (400)
Lever	6.61	8.82	9.92	13.23	23.15	-	-	-	-	-	-
Gear	11.02	13.23	14.33	17.64	25.35	31.97	50.71	73.85	101.41	125.66	169.76

CV VALUES:

Size		Cv	
inches	mm	Lever operator	Gear operator
2"	50	100	100
2-1/2"	65	285	285
3"	80	600	600
4"	100	940	940
5"	125	1500	1500
6"	150	-	2500
8"	200	-	4200
10"	250	-	940
12"	300	-	1500
14"	350	-	2500
16"	400	-	4200

VACUUM SERVICE (INCHES OF MERCURY):

Size		Lever operator	Gear operator
inches	mm		
2"	50	-29.92	-29.92
2-1/2"	65	-29.92	-29.92
3"	80	-29.92	-29.92
4"	100	-29.92	-29.92
5"	125	-29.92	-29.92
6"	150	-	-29.92
8"	200	-	-29.92
10"	250	-	-29.92
12"	300	-	-29.92
14"	350	-	-29.92
16"	400	-	-29.92

SPECIFICATIONS:

- SIZES:** Lever: 2" - 5"
Gear: 2" - 16"
- MODELS:** Wafer style
- OPERATORS:** Lever and Gear
- BODY:** Powdercoat finish Ductile Cast Iron (FCD-S)
- DISCS:** PTFE
- SEATS:** PTFE backed with Neoprene®‡
- SEALS:** Same as seating material
- STEMS:** 304 stainless steel

‡ - Trademark of E. I. du Pont de Nemours and Company