



Double Containment Product  
**Double Containment Products**

# Double Containment



## **PRODUCT**

Contact Spears® for any Information not found.

## Double Containment Product Double Containment Overview



### DOUBLE CONTAINMENT SYSTEM DESIGN

Spears® Double Containment (DC) Fittings are constructed from standard fittings that are to be *assembled on the jobsite*. Spears® DC fittings work with standard pipe for both Carrier and Containment lines. Carrier fittings are equipped with special extender couplings for connection to carrier pipe. Simple, slip-on centralizer brackets used on the carrier pipe support this assembly inside the containment pipe. This design allows the carrier fitting to "float" within the containment fitting, allowing ease of movement for installation while reducing problems associated with thermal expansion and contraction during operation. This simplified approach to double containment makes installation very easy. However, successful installation requires proper design and planning of system layout, a basic understanding of how Spears® double containment fitting design works, and specific attention to a proper sequence of general assembly. See *Double Containment Design & Installation Guide* for additional details on design, installation and different configuration applications. DC fitting sizes are listed through 12", but additional sizes are available on request.

### CONFIGURATIONS

**DC Pipe:** Spears® DC Fittings can be used with any standard pipe of the corresponding size and schedule. As a result, pipe is not listed in this product Schedule.  
**DC Fittings:** Each configuration includes all components to form an internal Carrier Fitting with applicable Extender-Couplings and an external Containment fitting. Each DC Fitting configuration is specified as Carrier Material & Schedule x Containment Material & Schedule. Refer to example below (additional information is found in specific fitting sections).

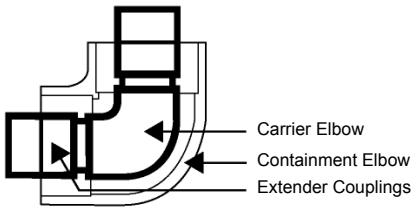
**Note: Assembled carrier/containment pipe available on request. Contact Spears® for additional information.**

#### Example

A Double Containment 90° Ell having a 1/2" Schedule 40 Carrier and 2" Schedule 40 Containment pipe would be listed as follows:

Product Name \_\_\_\_\_ DC 90° Ell  
 Configuration Description \_\_\_\_\_ PVC Sch 40 x PVC Sch 40

| Part Number    | Size  | Prod Code |
|----------------|-------|-----------|
| DC06-A005-A020 | 1/2X2 | 470       |



Centralizer Brackets should be ordered separately for Carrier pipe support in runs of Containment pipe.

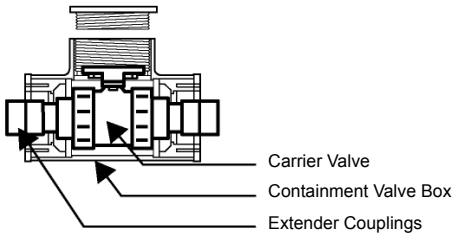
**Valve Boxes:** Like DC Fittings, Valve Boxes include all necessary components for connection to the designated Carrier x Containment system. Valve Boxes include the applicable True Union Industrial Ball Valve, Ball Check Valve, or Diaphragm Valve, with designated elastomer seals. Refer to example below (additional information is found in specific Valve Box sections).

#### Example

A Valve Box with True Union 2000 Industrial Ball Valve having a 1/2" valve with Schedule 40 Carrier and 2" Schedule 40 Containment pipe would be listed as follows:

Product Name \_\_\_\_\_ Valve Box, with PVC True Union 2000 Industrial Ball Valve  
 Configuration Description \_\_\_\_\_ PVC Sch 40 x PVC Sch 40

| Size  | EPDM            | FKM             | Prod Code |
|-------|-----------------|-----------------|-----------|
| 1/2X2 | VBA20-A005-A020 | VBA30-A005-A020 | 470       |





**Tees**

**Tees**



DC Tees are made from standard Spears® pressure fittings in designated material and Schedule selected. Included are separate internal Carrier and external Containment fittings of the same configuration. Carrier fittings are equipped with extenders to facilitate cement assembly. Certain combinations use larger Containment tees that are bushed to specified size.

Important Note: Some Tees are shipped with the Carrier Tee branch extender separated from the Carrier Tee assembly to facilitate assembly. The Carrier Tee branch extension must be cemented in place after the run Carrier Tee assembly is completed. See *Double Containment Design & Installation Guide* for proper installation.

Centralizers are used inside the Containment piping system, but not inside fittings, installed on Carrier pipe and must be ordered separately according to same Carrier x Containment size and pipe schedule selected.

<sup>1</sup> Configuration uses larger size Containment Tee with Outlets Bushed down

**DC Tee PVC Sch 40 x PVC Sch 40**

| Part Number    | Size    | Std Pk | Mstr Ctn | Prod Code |
|----------------|---------|--------|----------|-----------|
| DC01-A005-A020 | 1/2X2   | 1      | 8        | 470       |
| DC01-A007-A030 | 3/4X3   | 1      | 10       | 470       |
| DC01-A010-A030 | 1X3     | 1      | 10       | 470       |
| DC01-A015-A040 | 1-1/2X4 | 1      | 4        | 470       |
| DC01-A020-A040 | 2X4     | 1      | 4        | 470       |
| DC01-A030-A060 | 3X6     | 1      | 2        | 470       |
| DC01-A040-A080 | 4X8     | 1      | 2        | 470       |
| DC01-A060-A100 | 6X10    | 1      | 0        | 470       |
| DC01-A080-A120 | 8X12    | 1      | 0        | 470       |

**DC Tee PVC Sch 40 x PVC Sch 40 Clear**

| Part Number    | Size    | Std Pk | Mstr Ctn | Prod Code |
|----------------|---------|--------|----------|-----------|
| DC01-A005-G020 | 1/2X2   | 1      | 8        | 470       |
| DC01-A007-G030 | 3/4X3   | 1      | 10       | 470       |
| DC01-A010-G030 | 1X3     | 1      | 10       | 470       |
| DC01-A015-G040 | 1-1/2X4 | 1      | 4        | 470       |

**DC Tee PVC Sch 40 x PVC Sch 40 Clear (continued)**

| Part Number    | Size | Std Pk | Mstr Ctn | Prod Code |
|----------------|------|--------|----------|-----------|
| DC01-A020-G040 | 2X4  | 1      | 4        | 470       |
| DC01-A030-G060 | 3X6  | 1      | 2        | 470       |
| DC01-A040-G080 | 4X8  | 1      | 2        | 470       |

**DC Tee PVC Sch 80 x PVC Sch 40**

| Part Number    | Size    | Std Pk | Mstr Ctn | Prod Code |
|----------------|---------|--------|----------|-----------|
| DC01-B005-A020 | 1/2X2   | 1      | 9        | 470       |
| DC01-B007-A030 | 3/4X3   | 1      | 10       | 470       |
| DC01-B010-A030 | 1X3     | 1      | 10       | 470       |
| DC01-B015-A040 | 1-1/2X4 | 1      | 4        | 470       |
| DC01-B020-A040 | 2X4     | 1      | 2        | 470       |
| DC01-B030-A060 | 3X6     | 1      | 2        | 470       |
| DC01-B040-A080 | 4X8     | 1      | 2        | 470       |
| DC01-B060-A100 | 6X10    | 1      | 0        | 470       |
| DC01-B080-A120 | 8X12    | 1      | 0        | 470       |

**DC Tee PVC Sch 80 x PVC Sch 40 Clear**

| Part Number    | Size    | Std Pk | Mstr Ctn | Prod Code |
|----------------|---------|--------|----------|-----------|
| DC01-B005-G020 | 1/2X2   | 1      | 9        | 470       |
| DC01-B007-G030 | 3/4X3   | 1      | 10       | 470       |
| DC01-B010-G030 | 1X3     | 1      | 10       | 470       |
| DC01-B015-G040 | 1-1/2X4 | 1      | 4        | 470       |
| DC01-B020-G040 | 2X4     | 1      | 2        | 470       |
| DC01-B030-G060 | 3X6     | 1      | 2        | 470       |
| DC01-B040-G080 | 4X8     | 1      | 2        | 470       |

**DC Tee PVC Sch 80 x PVC Sch 80**

| Part Number                 | Size    | Std Pk | Mstr Ctn | Prod Code |
|-----------------------------|---------|--------|----------|-----------|
| DC01-B005-B020              | 1/2X2   | 1      | 10       | 470       |
| DC01-B007-B030              | 3/4X3   | 1      | 10       | 470       |
| DC01-B010-B030              | 1X3     | 1      | 5        | 470       |
| DC01-B015-B040              | 1-1/2X4 | 1      | 4        | 470       |
| DC01-B020-B040 <sup>1</sup> | 2X4     | 1      | 0        | 470       |
| DC01-B030-B060              | 3X6     | 1      | 2        | 470       |
| DC01-B040-B080              | 4X8     | 1      | 0        | 470       |
| DC01-B060-B100              | 6X10    | 1      | 0        | 470       |
| DC01-B080-B120              | 8X12    | 1      | 0        | 470       |

**DC Tee CPVC Sch 80 x PVC Sch 40**

| Part Number    | Size    | Std Pk | Mstr Ctn | Prod Code |
|----------------|---------|--------|----------|-----------|
| DC01-C005-A020 | 1/2X2   | 1      | 10       | 470       |
| DC01-C007-A030 | 3/4X3   | 1      | 5        | 470       |
| DC01-C010-A030 | 1X3     | 1      | 10       | 470       |
| DC01-C015-A040 | 1-1/2X4 | 1      | 4        | 470       |
| DC01-C020-A040 | 2X4     | 1      | 2        | 470       |
| DC01-C030-A060 | 3X6     | 1      | 2        | 470       |
| DC01-C040-A080 | 4X8     | 1      | 0        | 470       |
| DC01-C060-A100 | 6X10    | 1      | 0        | 470       |
| DC01-C080-A120 | 8X12    | 1      | 0        | 470       |

**DC Tee CPVC Sch 80 x PVC Sch 80**

| Part Number    | Size  | Std Pk | Mstr Ctn | Prod Code |
|----------------|-------|--------|----------|-----------|
| DC01-C005-B020 | 1/2X2 | 1      | 9        | 470       |
| DC01-C007-B030 | 3/4X3 | 1      | 5        | 470       |
| DC01-C010-B030 | 1X3   | 1      | 5        | 470       |

**Double Containment Product**  
**Tees & 90° Ells**



**Tees**

**DC Tee CPVC Sch 80 x PVC Sch 80 (continued)**

| Part Number                 | Size           | Std Pk | Mstr Ctn | Prod Code |
|-----------------------------|----------------|--------|----------|-----------|
| DC01-C015-B040              | <b>1-1/2X4</b> | 1      | 4        | 470       |
| DC01-C020-B040 <sup>1</sup> | <b>2X4</b>     | 1      | 4        | 470       |
| DC01-C030-B060              | <b>3X6</b>     | 1      | 2        | 470       |
| DC01-C040-B080              | <b>4X8</b>     | 1      | 0        | 470       |
| DC01-C060-B100              | <b>6X10</b>    | 1      | 0        | 470       |
| DC01-C080-B120              | <b>8X12</b>    | 1      | 0        | 470       |

**DC Tee CPVC Sch 80 x CPVC Sch 80**

| Part Number                 | Size           | Std Pk | Mstr Ctn | Prod Code |
|-----------------------------|----------------|--------|----------|-----------|
| DC01-C005-C020              | <b>1/2X2</b>   | 1      | 10       | 470       |
| DC01-C007-C030              | <b>3/4X3</b>   | 1      | 10       | 470       |
| DC01-C010-C030              | <b>1X3</b>     | 1      | 5        | 470       |
| DC01-C015-C040              | <b>1-1/2X4</b> | 1      | 5        | 470       |
| DC01-C020-C040 <sup>1</sup> | <b>2X4</b>     | 1      | 0        | 470       |
| DC01-C030-C060              | <b>3X6</b>     | 1      | 2        | 470       |
| DC01-C040-C080              | <b>4X8</b>     | 1      | 2        | 470       |
| DC01-C060-C100              | <b>6X10</b>    | 1      | 0        | 470       |
| DC01-C080-C120              | <b>8X12</b>    | 1      | 0        | 470       |

**DC Tee CPVC Sch 80 x PVC Sch 40 Clear**

| Part Number    | Size           | Std Pk | Mstr Ctn | Prod Code |
|----------------|----------------|--------|----------|-----------|
| DC01-C005-G020 | <b>1/2X2</b>   | 1      | 9        | 470       |
| DC01-C007-G030 | <b>3/4X3</b>   | 1      | 5        | 470       |
| DC01-C010-G030 | <b>1X3</b>     | 1      | 10       | 470       |
| DC01-C015-G040 | <b>1-1/2X4</b> | 1      | 6        | 470       |
| DC01-C020-G040 | <b>2X4</b>     | 1      | 2        | 470       |
| DC01-C030-G060 | <b>3X6</b>     | 1      | 2        | 470       |
| DC01-C040-G080 | <b>4X8</b>     | 1      | 2        | 470       |

**90° Ells**



DC 90° Ells are made from standard Spears® pressure fittings in designated material and Schedule selected. Included are separate internal Carrier and external Containment fittings of the same configuration. Carrier fittings are equipped with extenders to facilitate cement assembly. See *Double Containment Design & Installation Guide* for proper installation.

Centralizers are used inside the Containment piping system, but not inside fittings, installed on Carrier pipe and must be ordered separately according to same Carrier x Containment size and pipe schedule selected.

**DC 90° Ell PVC Sch 40 x PVC Sch 40**

| Part Number    | Size           | Std Pk | Mstr Ctn | Prod Code |
|----------------|----------------|--------|----------|-----------|
| DC06-A005-A020 | <b>1/2X2</b>   | 1      | 25       | 470       |
| DC06-A007-A030 | <b>3/4X3</b>   | 1      | 10       | 470       |
| DC06-A010-A030 | <b>1X3</b>     | 1      | 10       | 470       |
| DC06-A015-A040 | <b>1-1/2X4</b> | 1      | 5        | 470       |
| DC06-A020-A040 | <b>2X4</b>     | 1      | 5        | 470       |
| DC06-A030-A060 | <b>3X6</b>     | 2      | 0        | 470       |
| DC06-A040-A080 | <b>4X8</b>     | 1      | 2        | 470       |
| DC06-A060-A100 | <b>6X10</b>    | 1      | 0        | 470       |
| DC06-A080-A120 | <b>8X12</b>    | 1      | 0        | 470       |

**DC 90° Ell PVC Sch 40 x PVC Sch 40 Clear**

| Part Number    | Size           | Std Pk | Mstr Ctn | Prod Code |
|----------------|----------------|--------|----------|-----------|
| DC06-A005-G020 | <b>1/2X2</b>   | 1      | 25       | 470       |
| DC06-A007-G030 | <b>3/4X3</b>   | 1      | 10       | 470       |
| DC06-A010-G030 | <b>1X3</b>     | 1      | 4        | 470       |
| DC06-A015-G040 | <b>1-1/2X4</b> | 1      | 5        | 470       |
| DC06-A020-G040 | <b>2X4</b>     | 1      | 8        | 470       |
| DC06-A030-G060 | <b>3X6</b>     | 1      | 2        | 470       |
| DC06-A040-G080 | <b>4X8</b>     | 1      | 2        | 470       |

**DC 90° Ell PVC Sch 80 x PVC Sch 40**

| Part Number    | Size           | Std Pk | Mstr Ctn | Prod Code |
|----------------|----------------|--------|----------|-----------|
| DC06-B005-A020 | <b>1/2X2</b>   | 1      | 25       | 470       |
| DC06-B007-A030 | <b>3/4X3</b>   | 1      | 10       | 470       |
| DC06-B010-A030 | <b>1X3</b>     | 1      | 10       | 470       |
| DC06-B015-A040 | <b>1-1/2X4</b> | 1      | 5        | 470       |
| DC06-B020-A040 | <b>2X4</b>     | 1      | 5        | 470       |
| DC06-B030-A060 | <b>3X6</b>     | 1      | 2        | 470       |
| DC06-B040-A080 | <b>4X8</b>     | 1      | 2        | 470       |
| DC06-B060-A100 | <b>6X10</b>    | 1      | 0        | 470       |
| DC06-B080-A120 | <b>8X12</b>    | 1      | 0        | 470       |

**DC 90° Ell PVC Sch 80 x PVC Sch 40 Clear**

| Part Number    | Size           | Std Pk | Mstr Ctn | Prod Code |
|----------------|----------------|--------|----------|-----------|
| DC06-B005-G020 | <b>1/2X2</b>   | 1      | 25       | 470       |
| DC06-B007-G030 | <b>3/4X3</b>   | 1      | 10       | 470       |
| DC06-B010-G030 | <b>1X3</b>     | 1      | 10       | 470       |
| DC06-B015-G040 | <b>1-1/2X4</b> | 1      | 8        | 470       |
| DC06-B020-G040 | <b>2X4</b>     | 1      | 4        | 470       |
| DC06-B030-G060 | <b>3X6</b>     | 1      | 4        | 470       |
| DC06-B040-G080 | <b>4X8</b>     | 1      | 2        | 470       |

**DC 90° Ell PVC Sch 80 x PVC Sch 80**

| Part Number    | Size           | Std Pk | Mstr Ctn | Prod Code |
|----------------|----------------|--------|----------|-----------|
| DC06-B005-B020 | <b>1/2X2</b>   | 1      | 20       | 470       |
| DC06-B007-B030 | <b>3/4X3</b>   | 1      | 10       | 470       |
| DC06-B010-B030 | <b>1X3</b>     | 1      | 10       | 470       |
| DC06-B015-B040 | <b>1-1/2X4</b> | 1      | 5        | 470       |
| DC06-B020-B040 | <b>2X4</b>     | 1      | 4        | 470       |
| DC06-B030-B060 | <b>3X6</b>     | 1      | 2        | 470       |
| DC06-B040-B080 | <b>4X8</b>     | 1      | 2        | 470       |
| DC06-B060-B100 | <b>6X10</b>    | 1      | 0        | 470       |
| DC06-B080-B120 | <b>8X12</b>    | 1      | 0        | 470       |



**Double Containment Product**  
**90° Ells & 45° Ells**

**90° Ells**

**DC 90° Ell CPVC Sch 80 x PVC Sch 40**

| Part Number    | Size    | Std Pk | Mstr Ctn | Prod Code |
|----------------|---------|--------|----------|-----------|
| DC06-C005-A020 | 1/2X2   | 1      | 8        | 470       |
| DC06-C007-A030 | 3/4X3   | 1      | 5        | 470       |
| DC06-C010-A030 | 1X3     | 1      | 5        | 470       |
| DC06-C015-A040 | 1-1/2X4 | 1      | 8        | 470       |
| DC06-C020-A040 | 2X4     | 1      | 5        | 470       |
| DC06-C030-A060 | 3X6     | 1      | 5        | 470       |
| DC06-C040-A080 | 4X8     | 1      | 2        | 470       |
| DC06-C060-A100 | 6X10    | 1      | 0        | 470       |
| DC06-C080-A120 | 8X12    | 1      | 0        | 470       |

**DC 90° Ell CPVC Sch 80 x PVC Sch 80**

| Part Number    | Size    | Std Pk | Mstr Ctn | Prod Code |
|----------------|---------|--------|----------|-----------|
| DC06-C005-B020 | 1/2X2   | 1      | 25       | 470       |
| DC06-C007-B030 | 3/4X3   | 1      | 5        | 470       |
| DC06-C010-B030 | 1X3     | 1      | 5        | 470       |
| DC06-C015-B040 | 1-1/2X4 | 1      | 4        | 470       |
| DC06-C020-B040 | 2X4     | 1      | 4        | 470       |
| DC06-C030-B060 | 3X6     | 1      | 0        | 470       |
| DC06-C040-B080 | 4X8     | 1      | 2        | 470       |
| DC06-C060-B100 | 6X10    | 1      | 0        | 470       |
| DC06-C080-B120 | 8X12    | 1      | 0        | 470       |

**DC 90° Ell CPVC Sch 80 x CPVC Sch 80**

| Part Number    | Size    | Std Pk | Mstr Ctn | Prod Code |
|----------------|---------|--------|----------|-----------|
| DC06-C005-C020 | 1/2X2   | 1      | 25       | 470       |
| DC06-C007-C030 | 3/4X3   | 1      | 10       | 470       |
| DC06-C010-C030 | 1X3     | 1      | 5        | 470       |
| DC06-C015-C040 | 1-1/2X4 | 1      | 5        | 470       |
| DC06-C020-C040 | 2X4     | 1      | 4        | 470       |
| DC06-C030-C060 | 3X6     | 2      | 0        | 470       |
| DC06-C040-C080 | 4X8     | 1      | 2        | 470       |
| DC06-C060-C100 | 6X10    | 1      | 0        | 470       |
| DC06-C080-C120 | 8X12    | 1      | 0        | 470       |

**DC 90° Ell CPVC Sch 80 x PVC Sch 40 Clear**

| Part Number    | Size    | Std Pk | Mstr Ctn | Prod Code |
|----------------|---------|--------|----------|-----------|
| DC06-C005-G020 | 1/2X2   | 1      | 23       | 470       |
| DC06-C007-G030 | 3/4X3   | 1      | 4        | 470       |
| DC06-C010-G030 | 1X3     | 1      | 5        | 470       |
| DC06-C015-G040 | 1-1/2X4 | 1      | 8        | 470       |
| DC06-C020-G040 | 2X4     | 1      | 8        | 470       |
| DC06-C030-G060 | 3X6     | 1      | 5        | 470       |
| DC06-C040-G080 | 4X8     | 1      | 2        | 470       |

**45° Ells**



DC 45° Ells are made from standard Spears® pressure fittings in designated material and Schedule selected. Included are separate internal Carrier and external Containment fittings of the same configuration. Carrier fittings are equipped with extenders to facilitate cement assembly. See *Double Containment Design & Installation Guide* for proper installation.

Centralizers are used inside the Containment piping system, but not inside fittings, installed on Carrier pipe and must be ordered separately, according to same Carrier x Containment size and pipe schedule selected.

**DC 45° Ell PVC Sch 40 x PVC Sch 40**

| Part Number    | Size    | Std Pk | Mstr Ctn | Prod Code |
|----------------|---------|--------|----------|-----------|
| DC17-A005-A020 | 1/2X2   | 1      | 25       | 470       |
| DC17-A007-A030 | 3/4X3   | 1      | 5        | 470       |
| DC17-A010-A030 | 1X3     | 1      | 5        | 470       |
| DC17-A015-A040 | 1-1/2X4 | 1      | 5        | 470       |
| DC17-A020-A040 | 2X4     | 1      | 4        | 470       |
| DC17-A030-A060 | 3X6     | 2      | 0        | 470       |
| DC17-A040-A080 | 4X8     | 1      | 3        | 470       |
| DC17-A060-A100 | 6X10    | 1      | 0        | 470       |
| DC17-A080-A120 | 8X12    | 1      | 0        | 470       |

**DC 45° Ell PVC Sch 40 x PVC Sch 40 Clear**

| Part Number    | Size    | Std Pk | Mstr Ctn | Prod Code |
|----------------|---------|--------|----------|-----------|
| DC17-A005-G020 | 1/2X2   | 1      | 25       | 470       |
| DC17-A007-G030 | 3/4X3   | 1      | 8        | 470       |
| DC17-A010-G030 | 1X3     | 1      | 5        | 470       |
| DC17-A015-G040 | 1-1/2X4 | 1      | 5        | 470       |
| DC17-A020-G040 | 2X4     | 1      | 4        | 470       |
| DC17-A030-G060 | 3X6     | 1      | 2        | 470       |
| DC17-A040-G080 | 4X8     | 1      | 3        | 470       |

**DC 45° Ell PVC Sch 80 x PVC Sch 40**

| Part Number    | Size    | Std Pk | Mstr Ctn | Prod Code |
|----------------|---------|--------|----------|-----------|
| DC17-B005-A020 | 1/2X2   | 1      | 25       | 470       |
| DC17-B007-A030 | 3/4X3   | 1      | 8        | 470       |
| DC17-B010-A030 | 1X3     | 1      | 10       | 470       |
| DC17-B015-A040 | 1-1/2X4 | 1      | 5        | 470       |

**Double Containment Product**  
**45° Ells & Couplings**



**45° Ells**

**DC 45° Ell PVC Sch 80 x PVC Sch 40 (continued)**

| Part Number    | Size        | Std Pk | Mstr Ctn | Prod Code |
|----------------|-------------|--------|----------|-----------|
| DC17-B020-A040 | <b>2X4</b>  | 1      | 5        | 470       |
| DC17-B030-A060 | <b>3X6</b>  | 1      | 7        | 470       |
| DC17-B040-A080 | <b>4X8</b>  | 1      | 2        | 470       |
| DC17-B060-A100 | <b>6X10</b> | 1      | 0        | 470       |
| DC17-B080-A120 | <b>8X12</b> | 1      | 0        | 470       |

**DC 45° Ell PVC Sch 80 x PVC Sch 40 Clear**

| Part Number    | Size           | Std Pk | Mstr Ctn | Prod Code |
|----------------|----------------|--------|----------|-----------|
| DC17-B005-G020 | <b>1/2X2</b>   | 1      | 10       | 470       |
| DC17-B007-G030 | <b>3/4X3</b>   | 1      | 8        | 470       |
| DC17-B010-G030 | <b>1X3</b>     | 1      | 5        | 470       |
| DC17-B015-G040 | <b>1-1/2X4</b> | 1      | 5        | 470       |
| DC17-B020-G040 | <b>2X4</b>     | 1      | 5        | 470       |
| DC17-B030-G060 | <b>3X6</b>     | 1      | 4        | 470       |
| DC17-B040-G080 | <b>4X8</b>     | 1      | 3        | 470       |

**DC 45° Ell PVC Sch 80 x PVC Sch 80**

| Part Number    | Size           | Std Pk | Mstr Ctn | Prod Code |
|----------------|----------------|--------|----------|-----------|
| DC17-B005-B020 | <b>1/2X2</b>   | 1      | 10       | 470       |
| DC17-B007-B030 | <b>3/4X3</b>   | 1      | 8        | 470       |
| DC17-B010-B030 | <b>1X3</b>     | 1      | 5        | 470       |
| DC17-B015-B040 | <b>1-1/2X4</b> | 1      | 5        | 470       |
| DC17-B020-B040 | <b>2X4</b>     | 1      | 5        | 470       |
| DC17-B030-B060 | <b>3X6</b>     | 1      | 2        | 470       |
| DC17-B040-B080 | <b>4X8</b>     | 1      | 2        | 470       |
| DC17-B060-B100 | <b>6X10</b>    | 1      | 0        | 470       |
| DC17-B080-B120 | <b>8X12</b>    | 1      | 0        | 470       |

**DC 45° Ell CPVC Sch 80 x PVC Sch 40**

| Part Number    | Size           | Std Pk | Mstr Ctn | Prod Code |
|----------------|----------------|--------|----------|-----------|
| DC17-C005-A020 | <b>1/2X2</b>   | 1      | 25       | 470       |
| DC17-C007-A030 | <b>3/4X3</b>   | 1      | 8        | 470       |
| DC17-C010-A030 | <b>1X3</b>     | 1      | 10       | 470       |
| DC17-C015-A040 | <b>1-1/2X4</b> | 1      | 5        | 470       |
| DC17-C020-A040 | <b>2X4</b>     | 1      | 5        | 470       |
| DC17-C030-A060 | <b>3X6</b>     | 1      | 5        | 470       |
| DC17-C040-A080 | <b>4X8</b>     | 1      | 3        | 470       |
| DC17-C060-A100 | <b>6X10</b>    | 1      | 0        | 470       |
| DC17-C080-A120 | <b>8X12</b>    | 1      | 0        | 470       |

**DC 45° Ell CPVC Sch 80 x PVC Sch 80**

| Part Number    | Size           | Std Pk | Mstr Ctn | Prod Code |
|----------------|----------------|--------|----------|-----------|
| DC17-C005-B020 | <b>1/2X2</b>   | 1      | 25       | 470       |
| DC17-C007-B030 | <b>3/4X3</b>   | 1      | 5        | 470       |
| DC17-C010-B030 | <b>1X3</b>     | 1      | 5        | 470       |
| DC17-C015-B040 | <b>1-1/2X4</b> | 1      | 4        | 470       |
| DC17-C020-B040 | <b>2X4</b>     | 1      | 5        | 470       |
| DC17-C030-B060 | <b>3X6</b>     | 1      | 5        | 470       |
| DC17-C040-B080 | <b>4X8</b>     | 1      | 2        | 470       |
| DC17-C060-B100 | <b>6X10</b>    | 1      | 0        | 470       |
| DC17-C080-B120 | <b>8X12</b>    | 1      | 0        | 470       |

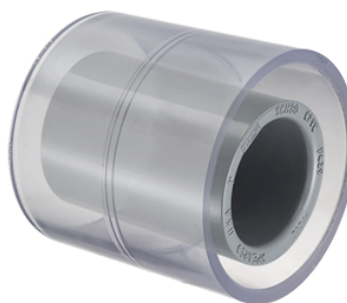
**DC 45° Ell CPVC Sch 80 x CPVC Sch 80**

| Part Number    | Size           | Std Pk | Mstr Ctn | Prod Code |
|----------------|----------------|--------|----------|-----------|
| DC17-C005-C020 | <b>1/2X2</b>   | 1      | 10       | 470       |
| DC17-C007-C030 | <b>3/4X3</b>   | 1      | 8        | 470       |
| DC17-C010-C030 | <b>1X3</b>     | 1      | 10       | 470       |
| DC17-C015-C040 | <b>1-1/2X4</b> | 1      | 5        | 470       |
| DC17-C020-C040 | <b>2X4</b>     | 1      | 5        | 470       |
| DC17-C030-C060 | <b>3X6</b>     | 1      | 2        | 470       |
| DC17-C040-C080 | <b>4X8</b>     | 1      | 2        | 470       |
| DC17-C060-C100 | <b>6X10</b>    | 1      | 0        | 470       |
| DC17-C080-C120 | <b>8X12</b>    | 1      | 0        | 470       |

**DC 45° Ell CPVC Sch 80 x PVC Sch 40 Clear**

| Part Number    | Size           | Std Pk | Mstr Ctn | Prod Code |
|----------------|----------------|--------|----------|-----------|
| DC17-C005-G020 | <b>1/2X2</b>   | 1      | 10       | 470       |
| DC17-C007-G030 | <b>3/4X3</b>   | 1      | 8        | 470       |
| DC17-C010-G030 | <b>1X3</b>     | 1      | 10       | 470       |
| DC17-C015-G040 | <b>1-1/2X4</b> | 1      | 5        | 470       |
| DC17-C020-G040 | <b>2X4</b>     | 1      | 5        | 470       |
| DC17-C030-G060 | <b>3X6</b>     | 1      | 5        | 470       |
| DC17-C040-G080 | <b>4X8</b>     | 1      | 3        | 470       |

**Couplings**



DC Couplings are made from standard Spears® pressure fittings in designated material and Schedule selected. Included are separate internal Carrier and external Containment fittings of the same configuration. Carrier fittings are equipped with extenders to facilitate cement assembly. See *Double Containment Design & Installation Guide* for proper installation.

Centralizers are used inside the Containment piping system, but not inside fittings, installed on Carrier pipe and must be ordered separately according to same Carrier x Containment size and pipe schedule selected.

**DC Coupling PVC Sch 40 x PVC Sch 40**

| Part Number    | Size           | Std Pk | Mstr Ctn | Prod Code |
|----------------|----------------|--------|----------|-----------|
| DC29-A005-A020 | <b>1/2X2</b>   | 1      | 25       | 470       |
| DC29-A007-A030 | <b>3/4X3</b>   | 1      | 10       | 470       |
| DC29-A010-A030 | <b>1X3</b>     | 1      | 10       | 470       |
| DC29-A015-A040 | <b>1-1/2X4</b> | 1      | 6        | 470       |
| DC29-A020-A040 | <b>2X4</b>     | 1      | 10       | 470       |



**Double Containment Product**  
**Couplings**

**Couplings**

**DC Coupling PVC Sch 40 x PVC Sch 40 (continued)**

| Part Number    | Size        | Std Pk | Mstr Ctn | Prod Code |
|----------------|-------------|--------|----------|-----------|
| DC29-A030-A060 | <b>3X6</b>  | 1      | 4        | 470       |
| DC29-A040-A080 | <b>4X8</b>  | 1      | 6        | 470       |
| DC29-A060-A100 | <b>6X10</b> | 1      | 2        | 470       |
| DC29-A080-A120 | <b>8X12</b> | 1      | 0        | 470       |

**DC Coupling PVC Sch 40 x PVC Sch 40 Clear**

| Part Number    | Size           | Std Pk | Mstr Ctn | Prod Code |
|----------------|----------------|--------|----------|-----------|
| DC29-A005-G020 | <b>1/2X2</b>   | 1      | 10       | 470       |
| DC29-A007-G030 | <b>3/4X3</b>   | 1      | 10       | 470       |
| DC29-A010-G030 | <b>1X3</b>     | 1      | 10       | 470       |
| DC29-A015-G040 | <b>1-1/2X4</b> | 1      | 6        | 470       |
| DC29-A020-G040 | <b>2X4</b>     | 1      | 8        | 470       |
| DC29-A030-G060 | <b>3X6</b>     | 1      | 4        | 470       |
| DC29-A040-G080 | <b>4X8</b>     | 1      | 6        | 470       |

**DC Coupling PVC Sch 80 x PVC Sch 40**

| Part Number    | Size           | Std Pk | Mstr Ctn | Prod Code |
|----------------|----------------|--------|----------|-----------|
| DC29-B005-A020 | <b>1/2X2</b>   | 1      | 25       | 470       |
| DC29-B007-A030 | <b>3/4X3</b>   | 1      | 10       | 470       |
| DC29-B010-A030 | <b>1X3</b>     | 1      | 5        | 470       |
| DC29-B015-A040 | <b>1-1/2X4</b> | 1      | 6        | 470       |
| DC29-B020-A040 | <b>2X4</b>     | 1      | 5        | 470       |
| DC29-B030-A060 | <b>3X6</b>     | 1      | 4        | 470       |
| DC29-B040-A080 | <b>4X8</b>     | 1      | 6        | 470       |
| DC29-B060-A100 | <b>6X10</b>    | 1      | 2        | 470       |
| DC29-B080-A120 | <b>8X12</b>    | 1      | 4        | 470       |

**DC Coupling PVC Sch 80 x PVC Sch 40 Clear**

| Part Number    | Size           | Std Pk | Mstr Ctn | Prod Code |
|----------------|----------------|--------|----------|-----------|
| DC29-B005-G020 | <b>1/2X2</b>   | 1      | 10       | 470       |
| DC29-B007-G030 | <b>3/4X3</b>   | 1      | 10       | 470       |
| DC29-B010-G030 | <b>1X3</b>     | 1      | 10       | 470       |
| DC29-B015-G040 | <b>1-1/2X4</b> | 1      | 6        | 470       |
| DC29-B020-G040 | <b>2X4</b>     | 1      | 8        | 470       |
| DC29-B030-G060 | <b>3X6</b>     | 1      | 4        | 470       |
| DC29-B040-G080 | <b>4X8</b>     | 1      | 4        | 470       |

**DC Coupling PVC Sch 80 x PVC Sch 80**

| Part Number    | Size           | Std Pk | Mstr Ctn | Prod Code |
|----------------|----------------|--------|----------|-----------|
| DC29-B005-B020 | <b>1/2X2</b>   | 1      | 10       | 470       |
| DC29-B007-B030 | <b>3/4X3</b>   | 1      | 5        | 470       |
| DC29-B010-B030 | <b>1X3</b>     | 1      | 5        | 470       |
| DC29-B015-B040 | <b>1-1/2X4</b> | 1      | 5        | 470       |
| DC29-B020-B040 | <b>2X4</b>     | 1      | 8        | 470       |
| DC29-B030-B060 | <b>3X6</b>     | 1      | 8        | 470       |
| DC29-B040-B080 | <b>4X8</b>     | 1      | 4        | 470       |
| DC29-B060-B100 | <b>6X10</b>    | 1      | 2        | 470       |
| DC29-B080-B120 | <b>8X12</b>    | 1      | 0        | 470       |

**DC Coupling CPVC Sch 80 x PVC Sch 40**

| Part Number    | Size         | Std Pk | Mstr Ctn | Prod Code |
|----------------|--------------|--------|----------|-----------|
| DC29-C005-A020 | <b>1/2X2</b> | 1      | 25       | 470       |

**DC Coupling CPVC Sch 80 x PVC Sch 40 (continued)**

| Part Number    | Size           | Std Pk | Mstr Ctn | Prod Code |
|----------------|----------------|--------|----------|-----------|
| DC29-C007-A030 | <b>3/4X3</b>   | 1      | 10       | 470       |
| DC29-C010-A030 | <b>1X3</b>     | 1      | 10       | 470       |
| DC29-C015-A040 | <b>1-1/2X4</b> | 1      | 6        | 470       |
| DC29-C020-A040 | <b>2X4</b>     | 1      | 6        | 470       |
| DC29-C030-A060 | <b>3X6</b>     | 1      | 4        | 470       |
| DC29-C040-A080 | <b>4X8</b>     | 1      | 6        | 470       |
| DC29-C060-A100 | <b>6X10</b>    | 1      | 2        | 470       |
| DC29-C080-A120 | <b>8X12</b>    | 1      | 4        | 470       |

**DC Coupling CPVC Sch 80 x PVC Sch 80**

| Part Number    | Size           | Std Pk | Mstr Ctn | Prod Code |
|----------------|----------------|--------|----------|-----------|
| DC29-C005-B020 | <b>1/2X2</b>   | 1      | 10       | 470       |
| DC29-C007-B030 | <b>3/4X3</b>   | 1      | 5        | 470       |
| DC29-C010-B030 | <b>1X3</b>     | 1      | 5        | 470       |
| DC29-C015-B040 | <b>1-1/2X4</b> | 1      | 6        | 470       |
| DC29-C020-B040 | <b>2X4</b>     | 1      | 4        | 470       |
| DC29-C030-B060 | <b>3X6</b>     | 1      | 4        | 470       |
| DC29-C040-B080 | <b>4X8</b>     | 1      | 4        | 470       |
| DC29-C060-B100 | <b>6X10</b>    | 1      | 2        | 470       |
| DC29-C080-B120 | <b>8X12</b>    | 1      | 0        | 470       |

**DC Coupling CPVC Sch 80 x CPVC Sch 80**

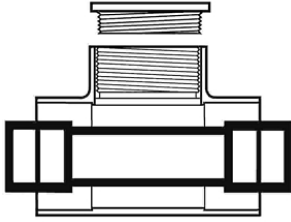
| Part Number    | Size           | Std Pk | Mstr Ctn | Prod Code |
|----------------|----------------|--------|----------|-----------|
| DC29-C005-C020 | <b>1/2X2</b>   | 1      | 10       | 470       |
| DC29-C007-C030 | <b>3/4X3</b>   | 1      | 5        | 470       |
| DC29-C010-C030 | <b>1X3</b>     | 1      | 10       | 470       |
| DC29-C015-C040 | <b>1-1/2X4</b> | 1      | 5        | 470       |
| DC29-C020-C040 | <b>2X4</b>     | 1      | 8        | 470       |
| DC29-C030-C060 | <b>3X6</b>     | 1      | 4        | 470       |
| DC29-C040-C080 | <b>4X8</b>     | 1      | 4        | 470       |
| DC29-C060-C100 | <b>6X10</b>    | 1      | 2        | 470       |
| DC29-C080-C120 | <b>8X12</b>    | 1      | 0        | 470       |

**DC Coupling CPVC Sch 80 x PVC Sch 40 Clear**

| Part Number    | Size           | Std Pk | Mstr Ctn | Prod Code |
|----------------|----------------|--------|----------|-----------|
| DC29-C005-G020 | <b>1/2X2</b>   | 1      | 10       | 470       |
| DC29-C007-G030 | <b>3/4X3</b>   | 1      | 10       | 470       |
| DC29-C010-G030 | <b>1X3</b>     | 1      | 10       | 470       |
| DC29-C015-G040 | <b>1-1/2X4</b> | 1      | 6        | 470       |
| DC29-C020-G040 | <b>2X4</b>     | 1      | 6        | 470       |
| DC29-C030-G060 | <b>3X6</b>     | 1      | 10       | 470       |
| DC29-C040-G080 | <b>4X8</b>     | 1      | 6        | 470       |



Access Tees



DC Access Tees are made from standard Spears® pressure fittings in designated material and Schedule selected. Included is an internal Carrier pipe section equipped with couplings and an external Containment Tee fitting equipped with a threaded Plug on the branch for access. See *Double Containment Design & Installation Guide* for proper installation.

Centralizers are used inside the Containment piping system, but not inside fittings, installed on Carrier pipe and must be ordered separately according to same Carrier x Containment size and pipe schedule selected.

DC Access Tee PVC Sch 40 x PVC Sch 40

| Part Number    | Size    | Std Pk | Mstr Ctn | Prod Code |
|----------------|---------|--------|----------|-----------|
| DCAT-A005-A020 | 1/2X2   | 1      | 10       | 470       |
| DCAT-A007-A030 | 3/4X3   | 1      | 5        | 470       |
| DCAT-A010-A030 | 1X3     | 1      | 5        | 470       |
| DCAT-A015-A040 | 1-1/2X4 | 1      | 3        | 470       |
| DCAT-A020-A040 | 2X4     | 1      | 5        | 470       |
| DCAT-A030-A060 | 3X6     | 1      | 4        | 470       |
| DCAT-A040-A080 | 4X8     | 1      | 0        | 470       |
| DCAT-A060-A100 | 6X10    | 1      | 0        | 470       |
| DCAT-A080-A120 | 8X12    | 1      | 0        | 470       |

DC Access Tee PVC Sch 40 x PVC Sch 40 Clear

| Part Number    | Size    | Std Pk | Mstr Ctn | Prod Code |
|----------------|---------|--------|----------|-----------|
| DCAT-A005-G020 | 1/2X2   | 1      | 10       | 470       |
| DCAT-A007-G030 | 3/4X3   | 1      | 10       | 470       |
| DCAT-A010-G030 | 1X3     | 1      | 10       | 470       |
| DCAT-A015-G040 | 1-1/2X4 | 1      | 6        | 470       |
| DCAT-A020-G040 | 2X4     | 1      | 6        | 470       |
| DCAT-A030-G060 | 3X6     | 1      | 4        | 470       |
| DCAT-A040-G080 | 4X8     | 1      | 0        | 470       |

DC Access Tee PVC Sch 80 x PVC Sch 40

| Part Number    | Size    | Std Pk | Mstr Ctn | Prod Code |
|----------------|---------|--------|----------|-----------|
| DCAT-B005-A020 | 1/2X2   | 1      | 10       | 470       |
| DCAT-B007-A030 | 3/4X3   | 1      | 10       | 470       |
| DCAT-B010-A030 | 1X3     | 1      | 6        | 470       |
| DCAT-B015-A040 | 1-1/2X4 | 1      | 6        | 470       |
| DCAT-B020-A040 | 2X4     | 1      | 6        | 470       |
| DCAT-B030-A060 | 3X6     | 1      | 4        | 470       |
| DCAT-B040-A080 | 4X8     | 1      | 2        | 470       |

DC Access Tee PVC Sch 80 x PVC Sch 40 (continued)

| Part Number    | Size | Std Pk | Mstr Ctn | Prod Code |
|----------------|------|--------|----------|-----------|
| DCAT-B060-A100 | 6X10 | 1      | 0        | 470       |
| DCAT-B080-A120 | 8X12 | 1      | 0        | 470       |

DC Access Tee PVC Sch 80 x PVC Sch 40 Clear

| Part Number    | Size    | Std Pk | Mstr Ctn | Prod Code |
|----------------|---------|--------|----------|-----------|
| DCAT-B005-G020 | 1/2X2   | 1      | 10       | 470       |
| DCAT-B007-G030 | 3/4X3   | 1      | 10       | 470       |
| DCAT-B010-G030 | 1X3     | 1      | 10       | 470       |
| DCAT-B015-G040 | 1-1/2X4 | 1      | 3        | 470       |
| DCAT-B020-G040 | 2X4     | 1      | 6        | 470       |
| DCAT-B030-G060 | 3X6     | 1      | 4        | 470       |
| DCAT-B040-G080 | 4X8     | 1      | 2        | 470       |

DC Access Tee PVC Sch 80 x PVC Sch 80

| Part Number    | Size    | Std Pk | Mstr Ctn | Prod Code |
|----------------|---------|--------|----------|-----------|
| DCAT-B005-B020 | 1/2X2   | 1      | 5        | 470       |
| DCAT-B007-B030 | 3/4X3   | 1      | 5        | 470       |
| DCAT-B010-B030 | 1X3     | 1      | 6        | 470       |
| DCAT-B015-B040 | 1-1/2X4 | 1      | 5        | 470       |
| DCAT-B020-B040 | 2X4     | 1      | 5        | 470       |
| DCAT-B030-B060 | 3X6     | 1      | 4        | 470       |
| DCAT-B040-B080 | 4X8     | 1      | 2        | 470       |
| DCAT-B060-B100 | 6X10    | 1      | 0        | 470       |
| DCAT-B080-B120 | 8X12    | 1      | 0        | 470       |

DC Access Tee CPVC Sch 80 x PVC Sch 40

| Part Number    | Size    | Std Pk | Mstr Ctn | Prod Code |
|----------------|---------|--------|----------|-----------|
| DCAT-C007-A030 | 3/4X3   | 1      | 5        | 470       |
| DCAT-C010-A030 | 1X3     | 1      | 6        | 470       |
| DCAT-C015-A040 | 1-1/2X4 | 1      | 6        | 470       |
| DCAT-C020-A040 | 2X4     | 1      | 6        | 470       |
| DCAT-C030-A060 | 3X6     | 1      | 4        | 470       |
| DCAT-C040-A080 | 4X8     | 1      | 2        | 470       |
| DCAT-C060-A100 | 6X10    | 1      | 0        | 470       |
| DCAT-C080-A120 | 8X12    | 1      | 0        | 470       |

DC Access Tee CPVC Sch 80 x PVC Sch 80

| Part Number    | Size    | Std Pk | Mstr Ctn | Prod Code |
|----------------|---------|--------|----------|-----------|
| DCAT-C005-B020 | 1/2X2   | 1      | 10       | 470       |
| DCAT-C007-B030 | 3/4X3   | 1      | 5        | 470       |
| DCAT-C010-B030 | 1X3     | 1      | 5        | 470       |
| DCAT-C015-B040 | 1-1/2X4 | 1      | 5        | 470       |
| DCAT-C020-B040 | 2X4     | 1      | 5        | 470       |
| DCAT-C030-B060 | 3X6     | 1      | 4        | 470       |
| DCAT-C040-B080 | 4X8     | 1      | 2        | 470       |
| DCAT-C060-B100 | 6X10    | 1      | 0        | 470       |
| DCAT-C080-B120 | 8X12    | 1      | 0        | 470       |

DC Access Tee CPVC Sch 80 x CPVC Sch 80

| Part Number    | Size    | Std Pk | Mstr Ctn | Prod Code |
|----------------|---------|--------|----------|-----------|
| DCAT-C005-C020 | 1/2X2   | 1      | 10       | 470       |
| DCAT-C007-C030 | 3/4X3   | 1      | 5        | 470       |
| DCAT-C010-C030 | 1X3     | 1      | 6        | 470       |
| DCAT-C015-C040 | 1-1/2X4 | 1      | 5        | 470       |
| DCAT-C020-C040 | 2X4     | 1      | 5        | 470       |



## Double Containment Product Access Tees & Closure Fittings

### Access Tees

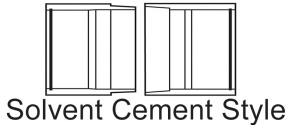
#### DC Access Tee CPVC Sch 80 x CPVC Sch 80 (continued)

| Part Number    | Size        | Std Pk | Mstr Ctn | Prod Code |
|----------------|-------------|--------|----------|-----------|
| DCAT-C030-C060 | <b>3X6</b>  | 1      | 4        | 470       |
| DCAT-C040-C080 | <b>4X8</b>  | 1      | 0        | 470       |
| DCAT-C060-C100 | <b>6X10</b> | 1      | 0        | 470       |
| DCAT-C080-C120 | <b>8X12</b> | 1      | 0        | 470       |

#### DC Access Tee CPVC Sch 80 x PVC Sch 40 Clear

| Part Number    | Size           | Std Pk | Mstr Ctn | Prod Code |
|----------------|----------------|--------|----------|-----------|
| DCAT-C005-G020 | <b>1/2X2</b>   | 1      | 10       | 470       |
| DCAT-C007-G030 | <b>3/4X3</b>   | 1      | 5        | 470       |
| DCAT-C010-G030 | <b>1X3</b>     | 1      | 5        | 470       |
| DCAT-C015-G040 | <b>1-1/2X4</b> | 1      | 3        | 470       |
| DCAT-C020-G040 | <b>2X4</b>     | 1      | 6        | 470       |
| DCAT-C030-G060 | <b>3X6</b>     | 1      | 4        | 470       |
| DCAT-C040-G080 | <b>4X8</b>     | 1      | 2        | 470       |

### Closure Fittings



A Closure Fitting is a special coupling configuration for joining both Carrier and Containment piping in situations where opposing runs of Carrier and Containment system must meet. Closure Fittings are frequently used at the end of a system where the final Termination Fitting must connect to a fixed point in the system. Spears® offers a complete range of Solvent Cement Closure Fittings that form a permanent solvent cement joint, plus special Union Closure Fittings in limited sizes that provide an easily-installed union to join these opposing Containment piping runs. See Double Containment Design & Installation Guide for proper installation.

Solvent Cement Closure Fittings consist of a male component and a female component. An internal O-ring on each component serves as a "cement-wiper" during installation to assure a proper joint. A "One-step" type cement, such as Spears® CPVC 24 for both PVC & CPVC, should be used to facilitate rapid assembly. See Double Containment Design & Installation Guide for proper installation.

Union Closure Fittings consist of a male component and female component with Union Nut and O-ring seal. Each component is installed on the carrier pipe incorporating a double O-ring seal on the carrier pipe with cemented retainers. Union Closure Fitting allows for easy access to carrier pipe after installation and also provides a small amount of expansion and contraction. See Double Containment Design & Installation Guide and product-enclosed instructions for proper installation.

### Closure Fittings

Centralizers are used inside the Containment piping system, but not inside fittings installed on Carrier pipe and must be ordered separately, according to same Carrier x Containment size and pipe schedule selected.

#### DC Solvent Cement Closure Fitting PVC Sch 40

| Part Number | Size      | Std Pk | Mstr Ctn | Prod Code |
|-------------|-----------|--------|----------|-----------|
| DCCF-A030   | <b>3</b>  | 1      | 10       | 470       |
| DCCF-A040   | <b>4</b>  | 1      | 5        | 470       |
| DCCF-A060   | <b>6</b>  | 1      | 2        | 470       |
| DCCF-A080   | <b>8</b>  | 1      | 0        | 470       |
| DCCF-A100   | <b>10</b> | 1      | 2        | 470       |
| DCCF-A120   | <b>12</b> | 1      | 2        | 470       |

#### DC Solvent Cement Closure Fitting PVC Sch 80

| Part Number | Size      | Std Pk | Mstr Ctn | Prod Code |
|-------------|-----------|--------|----------|-----------|
| DCCF-B020   | <b>2</b>  | 1      | 10       | 470       |
| DCCF-B030   | <b>3</b>  | 1      | 10       | 470       |
| DCCF-B040   | <b>4</b>  | 1      | 5        | 470       |
| DCCF-B060   | <b>6</b>  | 1      | 2        | 470       |
| DCCF-B080   | <b>8</b>  | 1      | 3        | 470       |
| DCCF-B100   | <b>10</b> | 1      | 2        | 470       |
| DCCF-B120   | <b>12</b> | 1      | 0        | 470       |

#### DC Solvent Cement Closure Fitting CPVC Sch 80

| Part Number | Size      | Std Pk | Mstr Ctn | Prod Code |
|-------------|-----------|--------|----------|-----------|
| DCCF-C020   | <b>2</b>  | 1      | 10       | 470       |
| DCCF-C030   | <b>3</b>  | 1      | 10       | 470       |
| DCCF-C040   | <b>4</b>  | 1      | 5        | 470       |
| DCCF-C060   | <b>6</b>  | 1      | 2        | 470       |
| DCCF-C080   | <b>8</b>  | 1      | 3        | 470       |
| DCCF-C100   | <b>10</b> | 1      | 2        | 470       |
| DCCF-C120   | <b>12</b> | 1      | 0        | 470       |

#### DC Solvent Cement Closure Fitting PVC Sch 40 Clear

| Part Number | Size     | Std Pk | Mstr Ctn | Prod Code |
|-------------|----------|--------|----------|-----------|
| DCCF-G030   | <b>3</b> | 1      | 10       | 470       |
| DCCF-G040   | <b>4</b> | 1      | 5        | 470       |
| DCCF-G060   | <b>6</b> | 1      | 2        | 470       |
| DCCF-G080   | <b>8</b> | 1      | 6        | 470       |

#### DC Union Closure Fittings PVC Clear - EPDM Seals

| Part Number | Size     | Std Pk | Mstr Ctn | Prod Code |
|-------------|----------|--------|----------|-----------|
| DCUC-030    | <b>3</b> | 1      | 0        | 471       |
| DCUC-040    | <b>4</b> | 1      | 0        | 471       |
| DCUC-060    | <b>6</b> | 1      | 0        | 471       |

Maximum 100 psi Short Term Hydrostatic Test Only.  
50 psi Working Pressure @ 73° F (23° C)

#### DC Union Closure Fittings PVC Clear - FKM Seals

| Part Number | Size     | Std Pk | Mstr Ctn | Prod Code |
|-------------|----------|--------|----------|-----------|
| DCUC2-040   | <b>4</b> | 1      | 0        | 471       |
| DCUC2-060   | <b>6</b> | 1      | 0        | 471       |

Double Containment Product  
**Closure Fittings & Isolation Couplers**

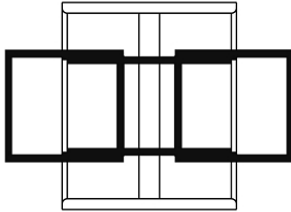


**Closure Fittings**

**DC Union Closure Fittings PVC Clear - FKM Seals (continued)**

| Part Number  | Size | Std Pk | Mstr Ctn | Prod Code |
|--|------|--------|----------|-----------|
| Maximum 100 psi Short Term Hydrostatic Test Only.<br>50 psi Working Pressure @ 73° F (23° C) |      |        |          |           |

**Isolation Couplers**



DC Isolation Couplers are to isolate a containment section for improved location identification if a leak is detected. When cemented into place, a suitable seal is formed for isolation of the containment sections. See *Double Containment Design & Installation Guide* for proper installation.

Centralizers are used inside the Containment piping system, but not inside fittings, installed on Carrier pipe and must be ordered separately according to same Carrier x Containment size and pipe schedule selected.

**DC Isolation Coupler PVC Sch 40 x PVC Sch 40**

| Part Number    | Size    | Std Pk | Mstr Ctn | Prod Code |
|----------------|---------|--------|----------|-----------|
| DCDB-A005-A020 | 1/2X2   | 1      | 5        | 470       |
| DCDB-A007-A030 | 3/4X3   | 1      | 5        | 470       |
| DCDB-A010-A030 | 1X3     | 1      | 5        | 470       |
| DCDB-A015-A040 | 1-1/2X4 | 1      | 4        | 470       |
| DCDB-A020-A040 | 2X4     | 1      | 4        | 470       |
| DCDB-A030-A060 | 3X6     | 1      | 4        | 470       |
| DCDB-A040-A080 | 4X8     | 1      | 4        | 470       |
| DCDB-A060-A100 | 6X10    | 1      | 10       | 470       |
| DCDB-A080-A120 | 8X12    | 1      | 0        | 470       |

**DC Isolation Coupler PVC Sch 40 x PVC Sch 40 Clear**

| Part Number    | Size    | Std Pk | Mstr Ctn | Prod Code |
|----------------|---------|--------|----------|-----------|
| DCDB-A005-G020 | 1/2X2   | 1      | 5        | 470       |
| DCDB-A007-G030 | 3/4X3   | 1      | 5        | 470       |
| DCDB-A010-G030 | 1X3     | 1      | 5        | 470       |
| DCDB-A015-G040 | 1-1/2X4 | 1      | 4        | 470       |
| DCDB-A020-G040 | 2X4     | 1      | 4        | 470       |
| DCDB-A030-G060 | 3X6     | 1      | 4        | 470       |
| DCDB-A040-G080 | 4X8     | 1      | 4        | 470       |

**DC Isolation Coupler PVC Sch 80 x PVC Sch 40**

| Part Number    | Size  | Std Pk | Mstr Ctn | Prod Code |
|----------------|-------|--------|----------|-----------|
| DCDB-B005-A020 | 1/2X2 | 1      | 5        | 470       |
| DCDB-B007-A030 | 3/4X3 | 1      | 5        | 470       |
| DCDB-B010-A030 | 1X3   | 1      | 4        | 470       |

**DC Isolation Coupler PVC Sch 80 x PVC Sch 40 (continued)**

| Part Number    | Size    | Std Pk | Mstr Ctn | Prod Code |
|----------------|---------|--------|----------|-----------|
| DCDB-B015-A040 | 1-1/2X4 | 1      | 4        | 470       |
| DCDB-B020-A040 | 2X4     | 1      | 4        | 470       |
| DCDB-B030-A060 | 3X6     | 1      | 5        | 470       |
| DCDB-B040-A080 | 4X8     | 1      | 4        | 470       |
| DCDB-B060-A100 | 6X10    | 1      | 0        | 470       |
| DCDB-B080-A120 | 8X12    | 1      | 0        | 470       |

**DC Isolation Coupler PVC Sch 80 x PVC Sch 40 Clear**

| Part Number    | Size    | Std Pk | Mstr Ctn | Prod Code |
|----------------|---------|--------|----------|-----------|
| DCDB-B005-G020 | 1/2X2   | 1      | 5        | 470       |
| DCDB-B010-G030 | 1X3     | 1      | 5        | 470       |
| DCDB-B015-G040 | 1-1/2X4 | 1      | 5        | 470       |
| DCDB-B020-G040 | 2X4     | 1      | 4        | 470       |
| DCDB-B030-G060 | 3X6     | 1      | 5        | 470       |
| DCDB-B040-G080 | 4X8     | 1      | 4        | 470       |

**DC Isolation Coupler PVC Sch 80 x PVC Sch 80**

| Part Number    | Size    | Std Pk | Mstr Ctn | Prod Code |
|----------------|---------|--------|----------|-----------|
| DCDB-B005-B020 | 1/2X2   | 1      | 12       | 470       |
| DCDB-B007-B030 | 3/4X3   | 1      | 5        | 470       |
| DCDB-B010-B030 | 1X3     | 1      | 5        | 470       |
| DCDB-B015-B040 | 1-1/2X4 | 1      | 4        | 470       |
| DCDB-B020-B040 | 2X4     | 1      | 4        | 470       |
| DCDB-B030-B060 | 3X6     | 1      | 4        | 470       |
| DCDB-B040-B080 | 4X8     | 1      | 4        | 470       |
| DCDB-B060-B100 | 6X10    | 1      | 0        | 470       |
| DCDB-B080-B120 | 8X12    | 1      | 0        | 470       |

**DC Isolation Coupler CPVC Sch 80 x PVC Sch 40**

| Part Number    | Size    | Std Pk | Mstr Ctn | Prod Code |
|----------------|---------|--------|----------|-----------|
| DCDB-C005-A020 | 1/2X2   | 1      | 5        | 470       |
| DCDB-C007-A030 | 3/4X3   | 1      | 5        | 470       |
| DCDB-C010-A030 | 1X3     | 1      | 5        | 470       |
| DCDB-C015-A040 | 1-1/2X4 | 1      | 4        | 470       |
| DCDB-C020-A040 | 2X4     | 1      | 4        | 470       |
| DCDB-C030-A060 | 3X6     | 1      | 5        | 470       |
| DCDB-C040-A080 | 4X8     | 1      | 4        | 470       |
| DCDB-C060-A100 | 6X10    | 1      | 0        | 470       |

**DC Isolation Coupler CPVC Sch 80 x Sch 80 Gray**

| Part Number    | Size    | Std Pk | Mstr Ctn | Prod Code |
|----------------|---------|--------|----------|-----------|
| DCDB-C005-B020 | 1/2X2   | 1      | 12       | 470       |
| DCDB-C007-B030 | 3/4X3   | 1      | 5        | 470       |
| DCDB-C010-B030 | 1X3     | 1      | 5        | 470       |
| DCDB-C015-B040 | 1-1/2X4 | 1      | 4        | 470       |
| DCDB-C020-B040 | 2X4     | 1      | 4        | 470       |
| DCDB-C030-B060 | 3X6     | 1      | 5        | 470       |
| DCDB-C040-B080 | 4X8     | 1      | 4        | 470       |
| DCDB-C060-B100 | 6X10    | 1      | 0        | 470       |

**DC Isolation Coupler CPVC Sch 80 x CPVC Sch 80**

| Part Number    | Size  | Std Pk | Mstr Ctn | Prod Code |
|----------------|-------|--------|----------|-----------|
| DCDB-C005-C020 | 1/2X2 | 1      | 12       | 470       |
| DCDB-C007-C030 | 3/4X3 | 1      | 5        | 470       |
| DCDB-C010-C030 | 1X3   | 1      | 5        | 470       |

Made in the U.S.A.

Suitable for Oil-Free air handling to 25 psi, not for distribution of compressed air or gas  
See MSRP-1 Sheet or Check Spears® On-line Catalog @ [www.spearsmfg.com](http://www.spearsmfg.com) for Pricing



**Double Containment Product**  
**Isolation Couplers & Termination Fittings**

**Isolation Couplers**

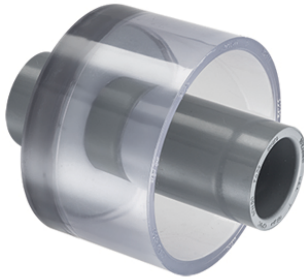
**DC Isolation Coupler CPVC Sch 80 x CPVC Sch 80 (continued)**

| Part Number    | Size           | Std Pk | Mstr Ctn | Prod Code |
|----------------|----------------|--------|----------|-----------|
| DCDB-C015-C040 | <b>1-1/2X4</b> | 1      | 4        | 470       |
| DCDB-C020-C040 | <b>2X4</b>     | 1      | 4        | 470       |
| DCDB-C030-C060 | <b>3X6</b>     | 1      | 4        | 470       |
| DCDB-C040-C080 | <b>4X8</b>     | 1      | 4        | 470       |
| DCDB-C060-C100 | <b>6X10</b>    | 1      | 0        | 470       |

**DC Isolation Coupler CPVC Sch 80 x PVC Sch 40 Clear**

| Part Number    | Size           | Std Pk | Mstr Ctn | Prod Code |
|----------------|----------------|--------|----------|-----------|
| DCDB-C005-G020 | <b>1/2X2</b>   | 1      | 5        | 470       |
| DCDB-C007-G030 | <b>3/4X3</b>   | 1      | 5        | 470       |
| DCDB-C010-G030 | <b>1X3</b>     | 1      | 5        | 470       |
| DCDB-C015-G040 | <b>1-1/2X4</b> | 1      | 4        | 470       |
| DCDB-C020-G040 | <b>2X4</b>     | 1      | 4        | 470       |
| DCDB-C030-G060 | <b>3X6</b>     | 1      | 5        | 470       |

**Termination Fittings**



DC Termination Fittings are a special configuration for starting or stopping the containment portion of a system. Termination Fittings consist of a reducer coupling to accept the Containment pipe that is pre-fabricated to an internal extender coupling for connection to existing Carrier system. See *Double Containment Design & Installation Guide* for proper installation.

Centralizers are used inside the Containment piping system, but not inside fittings, installed on Carrier pipe and must be ordered separately according to same Carrier x Containment size and pipe schedule selected.

**DC Termination Fitting PVC Sch 40 x PVC Sch 40**

| Part Number    | Size           | Std Pk | Mstr Ctn | Prod Code |
|----------------|----------------|--------|----------|-----------|
| DCTM-A005-A020 | <b>1/2X2</b>   | 8      | 0        | 470       |
| DCTM-A007-A030 | <b>3/4X3</b>   | 7      | 0        | 470       |
| DCTM-A010-A030 | <b>1X3</b>     | 9      | 0        | 470       |
| DCTM-A015-A040 | <b>1-1/2X4</b> | 4      | 0        | 470       |
| DCTM-A020-A040 | <b>2X4</b>     | 5      | 0        | 470       |
| DCTM-A030-A060 | <b>3X6</b>     | 1      | 2        | 470       |
| DCTM-A040-A080 | <b>4X8</b>     | 1      | 2        | 470       |
| DCTM-A060-A100 | <b>6X10</b>    | 1      | 2        | 470       |
| DCTM-A080-A120 | <b>8X12</b>    | 1      | 2        | 470       |

**DC Termination Fitting PVC Sch 40 x PVC Sch 40 Clear**

| Part Number    | Size         | Std Pk | Mstr Ctn | Prod Code |
|----------------|--------------|--------|----------|-----------|
| DCTM-A005-G020 | <b>1/2X2</b> | 1      | 8        | 470       |

**DC Termination Fitting PVC Sch 40 x PVC Sch 40 Clear (continued)**

| Part Number    | Size           | Std Pk | Mstr Ctn | Prod Code |
|----------------|----------------|--------|----------|-----------|
| DCTM-A007-G030 | <b>3/4X3</b>   | 7      | 0        | 470       |
| DCTM-A010-G030 | <b>1X3</b>     | 1      | 9        | 470       |
| DCTM-A015-G040 | <b>1-1/2X4</b> | 1      | 4        | 470       |
| DCTM-A020-G040 | <b>2X4</b>     | 1      | 4        | 470       |
| DCTM-A030-G060 | <b>3X6</b>     | 1      | 2        | 470       |
| DCTM-A040-G080 | <b>4X8</b>     | 1      | 3        | 470       |

**DC Termination Fitting PVC Sch 80 x PVC Sch 40**

| Part Number    | Size           | Std Pk | Mstr Ctn | Prod Code |
|----------------|----------------|--------|----------|-----------|
| DCTM-B005-A020 | <b>1/2X2</b>   | 8      | 0        | 470       |
| DCTM-B007-A030 | <b>3/4X3</b>   | 9      | 0        | 470       |
| DCTM-B010-A030 | <b>1X3</b>     | 8      | 0        | 470       |
| DCTM-B015-A040 | <b>1-1/2X4</b> | 4      | 0        | 470       |
| DCTM-B020-A040 | <b>2X4</b>     | 5      | 0        | 470       |
| DCTM-B030-A060 | <b>3X6</b>     | 1      | 4        | 470       |
| DCTM-B040-A080 | <b>4X8</b>     | 1      | 3        | 470       |
| DCTM-B060-A100 | <b>6X10</b>    | 1      | 0        | 470       |
| DCTM-B080-A120 | <b>8X12</b>    | 1      | 3        | 470       |

**DC Termination Fitting PVC Sch 80 x PVC Sch 40 Clear**

| Part Number    | Size           | Std Pk | Mstr Ctn | Prod Code |
|----------------|----------------|--------|----------|-----------|
| DCTM-B005-G020 | <b>1/2X2</b>   | 9      | 0        | 470       |
| DCTM-B007-G030 | <b>3/4X3</b>   | 10     | 0        | 470       |
| DCTM-B010-G030 | <b>1X3</b>     | 8      | 0        | 470       |
| DCTM-B015-G040 | <b>1-1/2X4</b> | 4      | 0        | 470       |
| DCTM-B020-G040 | <b>2X4</b>     | 5      | 0        | 470       |
| DCTM-B030-G060 | <b>3X6</b>     | 1      | 2        | 470       |
| DCTM-B040-G080 | <b>4X8</b>     | 1      | 3        | 470       |

**DC Termination Fitting PVC Sch 80 x PVC Sch 80**

| Part Number    | Size           | Std Pk | Mstr Ctn | Prod Code |
|----------------|----------------|--------|----------|-----------|
| DCTM-B005-B020 | <b>1/2X2</b>   | 10     | 0        | 470       |
| DCTM-B007-B030 | <b>3/4X3</b>   | 8      | 0        | 470       |
| DCTM-B010-B030 | <b>1X3</b>     | 8      | 0        | 470       |
| DCTM-B015-B040 | <b>1-1/2X4</b> | 4      | 0        | 470       |
| DCTM-B020-B040 | <b>2X4</b>     | 4      | 0        | 470       |
| DCTM-B030-B060 | <b>3X6</b>     | 1      | 2        | 470       |
| DCTM-B040-B080 | <b>4X8</b>     | 1      | 2        | 470       |
| DCTM-B060-B100 | <b>6X10</b>    | 1      | 0        | 470       |
| DCTM-B080-B120 | <b>8X12</b>    | 1      | 3        | 470       |

**DC Termination Fitting CPVC Sch 80 x PVC Sch 40**

| Part Number    | Size           | Std Pk | Mstr Ctn | Prod Code |
|----------------|----------------|--------|----------|-----------|
| DCTM-C005-A020 | <b>1/2X2</b>   | 8      | 0        | 470       |
| DCTM-C007-A030 | <b>3/4X3</b>   | 1      | 8        | 470       |
| DCTM-C010-A030 | <b>1X3</b>     | 8      | 0        | 470       |
| DCTM-C015-A040 | <b>1-1/2X4</b> | 4      | 0        | 470       |
| DCTM-C020-A040 | <b>2X4</b>     | 3      | 0        | 470       |
| DCTM-C030-A060 | <b>3X6</b>     | 1      | 2        | 470       |
| DCTM-C040-A080 | <b>4X8</b>     | 1      | 3        | 470       |
| DCTM-C060-A100 | <b>6X10</b>    | 1      | 0        | 470       |
| DCTM-C080-A120 | <b>8X12</b>    | 1      | 3        | 470       |

**Double Containment Product**  
**Termination Fittings & Centralizers**



**Termination Fittings**

**DC Termination Fitting CPVC Sch 80 x Sch 80 Gray**

| Part Number    | Size    | Std Pk | Mstr Ctn | Prod Code |
|----------------|---------|--------|----------|-----------|
| DCTM-C005-B020 | 1/2X2   | 8      | 0        | 470       |
| DCTM-C007-B030 | 3/4X3   | 8      | 0        | 470       |
| DCTM-C010-B030 | 1X3     | 8      | 0        | 470       |
| DCTM-C015-B040 | 1-1/2X4 | 4      | 0        | 470       |
| DCTM-C020-B040 | 2X4     | 1      | 4        | 470       |
| DCTM-C030-B060 | 3X6     | 1      | 2        | 470       |
| DCTM-C040-B080 | 4X8     | 1      | 3        | 470       |
| DCTM-C060-B100 | 6X10    | 1      | 2        | 470       |
| DCTM-C080-B120 | 8X12    | 1      | 3        | 470       |

**DC Termination Fitting CPVC Sch 80 x PVC Sch 40 Clear**

| Part Number    | Size    | Std Pk | Mstr Ctn | Prod Code |
|----------------|---------|--------|----------|-----------|
| DCTM-C005-G020 | 1/2X2   | 8      | 0        | 470       |
| DCTM-C007-G030 | 3/4X3   | 1      | 9        | 470       |
| DCTM-C010-G030 | 1X3     | 9      | 0        | 470       |
| DCTM-C015-G040 | 1-1/2X4 | 10     | 0        | 470       |
| DCTM-C020-G040 | 2X4     | 3      | 0        | 470       |
| DCTM-C030-G060 | 3X6     | 1      | 15       | 470       |
| DCTM-C040-G080 | 4X8     | 1      | 3        | 470       |

**DC Termination Fitting CPVC Sch 80 x CPVC Sch 80**

| Part Number    | Size    | Std Pk | Mstr Ctn | Prod Code |
|----------------|---------|--------|----------|-----------|
| DCTM-C005-C020 | 1/2X2   | 9      | 0        | 470       |
| DCTM-C007-C030 | 3/4X3   | 8      | 0        | 470       |
| DCTM-C010-C030 | 1X3     | 4      | 0        | 470       |
| DCTM-C015-C040 | 1-1/2X4 | 4      | 0        | 470       |
| DCTM-C020-C040 | 2X4     | 4      | 0        | 470       |
| DCTM-C030-C060 | 3X6     | 1      | 2        | 470       |
| DCTM-C040-C080 | 4X8     | 1      | 2        | 470       |
| DCTM-C060-C100 | 6X10    | 1      | 0        | 470       |
| DCTM-C080-C120 | 8X12    | 1      | 3        | 470       |

**Centralizers**



Centralizers are a simple slip-on design that are positioned and held in place by a few wraps of clean-room adhesive on each side. Centralizers hold the Carrier piping centrally located within the Containment piping and are designed with an annular space for routing of leak detection cable, if used. See *Double Containment Design & Installation Guide* for proper installation. The following Spacing Chart can be used as a guide for determining the quantity of Centralizers needed, based on temperature and Carrier pipe size and schedule selected.

Made in the U.S.A.

**Centralizers**

**RECOMMENDED MINIMUM CENTRALIZER SUPPORT SPACING (ft.) \***

| Carrier Size (in.) | PVC SCHEDULE 40 CARRIER<br>Temperature °F |        |       |       |       |
|--------------------|---|--------|-------|-------|-------|
|                    | 60°                                       | 80°    | 100°  | 120°  | 140°  |
| 1/2                | 4-1/2                                     | 4-1/2  | 4     | 2-1/2 | 2-1/2 |
| 3/4                | 5   | 4-1/2  | 4     | 2-1/2 | 2-1/2 |
| 1                  | 5-1/2                                     | 5      | 4-1/2 | 3     | 2-1/2 |
| 1-1/2              | 6   | 5-1/2  | 5     | 3-1/2 | 3     |
| 2                  | 6   | 5-1/2  | 5     | 3-1/2 | 3     |
| 3                  | 7   | 7      | 6     | 4     | 3-1/2 |
| 4                  | 7-1/2                                     | 7      | 6-1/2 | 4-1/2 | 4     |
| 6                  | 8-1/2                                     | 8      | 7-1/2 | 5     | 4-1/2 |
| 8                  | 9   | 8-1/2  | 8     | 5     | 4-1/2 |
| 10                 | 10  | 9      | 8-1/2 | 5-1/2 | 5     |
| 12                 | 11-1/2                                    | 10-1/2 | 9-1/2 | 6-1/2 | 5-1/2 |

| Carrier Size (in.) | PVC SCHEDULE 80 CARRIER<br>Temperature °F |        |       |        |       |
|--------------------|---|--------|-------|--------|-------|
|                    | 60°                                       | 80°    | 100°  | 120°   | 140°  |
| 1/2                | 5   | 4-1/2  | 4-1/2 | 3      | 2-1/2 |
| 3/4                | 5-1/2                                     | 5      | 4-1/2 | 3      | 2-1/2 |
| 1                  | 6   | 5-1/2  | 5     | 3-1/2  | 3     |
| 1-1/2              | 6-1/2                                     | 6      | 5-1/2 | 3-1/2  | 3-1/2 |
| 2                  | 7   | 6-1/2  | 6     | 4      | 3-1/2 |
| 3                  | 8   | 7-1/2  | 7     | 4-1/2  | 4     |
| 4                  | 9   | 8-1/2  | 7-1/2 | 5      | 4-1/2 |
| 6                  | 10  | 9-1/2  | 9     | 6      | 5     |
| 8                  | 11  | 10-1/2 | 9-1/2 | 6-1/2  | 5-1/2 |
| 10                 | 12  | 11     | 10    | 7      | 6     |
| 12                 | 5-1/2                                     | 13     | 12    | 10-1/2 | 7-1/2 |

| Carrier Size (in.) | CPVC SCHEDULE 80 CARRIER<br>Temperature °F |        |        |        |       |       |
|--------------------|--|--------|--------|--------|-------|-------|
|                    | 73°  | 100°   | 120°   | 140°   | 180°  |       |
| 1/2                | 5-1/2                                      | 5      | 4-1/2  | 4-1/2  | 3     | 2-1/2 |
| 3/4                | 5-1/2                                      | 5-1/2  | 5      | 4-1/2  | 3     | 2-1/2 |
| 1                  | 6  | 6      | 5-1/2  | 5      | 3-1/2 | 2     |
| 1-1/2              | 7  | 6-1/2  | 6      | 5-1/2  | 3-1/2 | 3-1/2 |
| 2                  | 7  | 7      | 6-1/2  | 6      | 4     | 3-1/2 |
| 3                  | 8  | 8      | 7-1/2  | 7      | 4-1/2 | 4     |
| 4                  | 9  | 8-1/2  | 8      | 7-1/2  | 5     | 4-1/2 |
| 6                  | 10   | 9-1/2  | 9      | 8      | 5-1/2 | 5     |
| 8                  | 11   | 10-1/2 | 10     | 9      | 6     | 5-1/2 |
| 10                 | 11-1/2                                     | 11     | 10-1/2 | 9-1/2  | 6-1/2 | 6     |
| 12                 | 12-1/2                                     | 12     | 11-1/2 | 10-1/2 | 7-1/2 | 6-1/2 |

**Note:** Specified minimum spacing can also be used for system support according to the secondary Containment pipe size and schedule used. Where practical, system support should correspond to internal carrier support (centralizers) to minimize concentrated point loads.

**Note:** Data furnished is based on raw material manufacturer's information. This information can be considered a reliable recommendation, but not a guarantee. Actual service conditions and system parameters should be evaluated by qualified personnel.

**DC Centralizer IPS O.D. x Sch 40 White I.D.**

| Part Number                  | Size  | Std Pk | Mstr Ctn | Prod Code |
|------------------------------|-------|--------|----------|-----------|
| <b>Carrier x Containment</b> |       |        |          |           |
| DCCT-H005-A020               | 1/2X2 | 55     | 330      | 470       |



## Double Containment Product Centralizers & Ball Valve Box With Valve

### Centralizers

#### DC Centralizer IPS O.D. x Sch 40 White I.D. (continued)

| Part Number                  | Size    | Std Pk | Mstr Ctn | Prod Code |
|------------------------------|---------|--------|----------|-----------|
| <b>Carrier x Containment</b> |         |        |          |           |
| DCCT-H007-A030               | 3/4X3   | 55     | 220      | 470       |
| DCCT-H010-A030               | 1X3     | 55     | 220      | 470       |
| DCCT-H015-A040               | 1-1/2X4 | 55     | 0        | 470       |
| DCCT-H020-A040               | 2X4     | 55     | 0        | 470       |
| DCCT-H030-A060               | 3X6     | 55     | 0        | 470       |
| DCCT-H040-A080               | 4X8     | 55     | 0        | 470       |
| DCCT-H060-A100               | 6X10    | 25     | 0        | 470       |
| DCCT-H080-A120               | 8X12    | 25     | 0        | 470       |

#### DC Centralizer IPS O.D. x Sch 40 Clear I.D.

| Part Number                  | Size    | Std Pk | Mstr Ctn | Prod Code |
|------------------------------|---------|--------|----------|-----------|
| <b>Carrier x Containment</b> |         |        |          |           |
| DCCT-H005-G020               | 1/2X2   | 55     | 330      | 470       |
| DCCT-H007-G020               | 3/4X2   | 55     | 330      | 470       |
| DCCT-H010-G030               | 1X3     | 55     | 220      | 470       |
| DCCT-H015-G040               | 1-1/2X4 | 55     | 220      | 470       |
| DCCT-H020-G040               | 2X4     | 55     | 0        | 470       |
| DCCT-H030-G060               | 3X6     | 55     | 0        | 470       |
| DCCT-H040-G080               | 4X8     | 55     | 0        | 470       |

#### DC Centralizer IPS O.D. x Sch 80 PVC I.D.

| Part Number                  | Size    | Std Pk | Mstr Ctn | Prod Code |
|------------------------------|---------|--------|----------|-----------|
| <b>Carrier x Containment</b> |         |        |          |           |
| DCCT-H005-B020               | 1/2X2   | 55     | 330      | 470       |
| DCCT-H007-B020               | 3/4X2   | 55     | 330      | 470       |
| DCCT-H010-B030               | 1X3     | 55     | 220      | 470       |
| DCCT-H015-B040               | 1-1/2X4 | 55     | 0        | 470       |
| DCCT-H020-B040               | 2X4     | 55     | 0        | 470       |
| DCCT-H030-B060               | 3X6     | 55     | 0        | 470       |
| DCCT-H040-B080               | 4X8     | 55     | 0        | 470       |
| DCCT-H060-B100               | 6X10    | 25     | 0        | 470       |
| DCCT-H080-B120               | 8X12    | 20     | 0        | 470       |

#### DC Centralizer IPS O.D. x Sch 80 CPVC I.D.

| Part Number                  | Size    | Std Pk | Mstr Ctn | Prod Code |
|------------------------------|---------|--------|----------|-----------|
| <b>Carrier x Containment</b> |         |        |          |           |
| DCCT-H005-C020               | 1/2X2   | 55     | 330      | 470       |
| DCCT-H007-C030               | 3/4X3   | 55     | 220      | 470       |
| DCCT-H010-C030               | 1X3     | 55     | 220      | 470       |
| DCCT-H015-C040               | 1-1/2X4 | 55     | 0        | 470       |
| DCCT-H020-C040               | 2X4     | 55     | 0        | 470       |
| DCCT-H030-C060               | 3X6     | 55     | 0        | 470       |
| DCCT-H040-C080               | 4X8     | 55     | 0        | 470       |
| DCCT-H060-C100               | 6X10    | 24     | 0        | 470       |
| DCCT-H080-C120               | 8X12    | 20     | 0        | 470       |

### Ball Valve Box With Valve



DC Ball Valve Boxes are made from a standard Spears® Tee fitting in designated material and Schedule selected, which is fitted with Carrier pipe size Ball Valve and bushed to specified Containment size. Includes Containment Valve Box fitting with threaded Access Plug, True Union 2000 Industrial Ball Valve with Lockout

Handle and Centralizers for positioning valve in box. Carrier valves are equipped with extenders to facilitate cement assembly. See *Double Containment Design & Installation Guide* for proper installation.

**General Installation Information:** Ball check valves may be installed in either horizontal or vertical position. A minimum of ten (10) pipe diameters' distance maintained from any pump or other source of turbulence. Check valves **MUST** be installed with the valve's FLOW arrow pointing in the direction of flow. While Valve Boxes include Centralizers for valve, additional Centralizers are used inside the Containment piping system installed on Carrier pipe and **must be ordered separately** according to same Carrier x Containment size and pipe schedule selected.

True Union 2000 Industrial Ball Valve Specifications, Sizes 1/2" - 2":

|            |                                  |                                       |
|------------|----------------------------------|---------------------------------------|
| Material:  | PVC/CPVC                         | Maximum Service Temperature           |
| Seats:     | PTFE                             | PVC = 140°F (60°C)                    |
| Seals:     | EPDM/FKM                         | CPVC = 200°F (93°C)                   |
| PR, Water: | 235 psi @ 73°F (23°C), 1/2" - 2" | Temperature/Pressure De-ratings Apply |

All Valves assembled with Silicone-Free, Water Soluble Lubricant

#### Valve Box, with PVC True Union 2000 Industrial Ball Valve PVC Sch 40 x PVC Sch 40

| Size    | EPDM            | FKM             | Std Pk | Mstr Pk | Prod Code |
|---------|-----------------|-----------------|--------|---------|-----------|
| 1/2X2   | VBA20-A005-A020 | VBA30-A005-A020 | 1      | 0       | 470       |
| 3/4X3   | VBA20-A007-A030 | VBA30-A007-A030 | 1      | 5       | 470       |
| 1X3     | VBA20-A010-A030 | VBA30-A010-A030 | 1      | 0       | 470       |
| 1-1/2X4 | VBA20-A015-A040 | VBA30-A015-A040 | 1      | 0       | 470       |
| 2X4     | VBA20-A020-A040 | VBA30-A020-A040 | 1      | 0       | 470       |

#### Valve Box, with PVC True Union 2000 Industrial Ball Valve PVC Sch 40 x PVC Sch 40 Clear

| Size    | EPDM            | FKM             | Std Pk | Mstr Pk | Prod Code |
|---------|-----------------|-----------------|--------|---------|-----------|
| 1/2X2   | VBA20-A005-G020 | VBA30-A005-G020 | 1      | 0       | 470       |
| 3/4X3   | VBA20-A007-G030 | VBA30-A007-G030 | 1      | 0       | 470       |
| 1X3     | VBA20-A010-G030 | VBA30-A010-G030 | 1      | 0       | 470       |
| 1-1/2X4 | VBA20-A015-G040 | VBA30-A015-G040 | 1      | 0       | 470       |

**Double Containment Product**  
**Ball Valve Box With Valve & Ball Check Valve Box With Valve**



**Ball Valve Box With Valve**

Valve Box, with PVC True Union 2000 Industrial Ball Valve  
 PVC Sch 40 x PVC Sch 40 Clear (continued)

| Size | EPDM            | FKM             | Std Pk | Mstr Pk | Prod Code |
|------|-----------------|-----------------|--------|---------|-----------|
| 2X4  | VBA20-A020-G040 | VBA30-A020-G040 | 1      | 0       | 470       |

Valve Box, with PVC True Union 2000 Industrial Ball Valve  
 PVC Sch 80 x PVC Sch 40

| Size    | EPDM            | FKM             | Std Pk | Mstr Pk | Prod Code |
|---------|-----------------|-----------------|--------|---------|-----------|
| 1/2X2   | VBA20-B005-A020 | VBA30-B005-A020 | 1      | 0       | 470       |
| 3/4X3   | VBA20-B007-A030 | VBA30-B007-A030 | 1      | 0       | 470       |
| 1X3     | VBA20-B010-A030 | VBA30-B010-A030 | 1      | 0       | 470       |
| 1-1/2X4 | VBA20-B015-A040 | VBA30-B015-A040 | 1      | 0       | 470       |
| 2X4     | VBA20-B020-A040 | VBA30-B020-A040 | 1      | 0       | 470       |

Valve Box, with PVC True Union 2000 Industrial Ball Valve  
 PVC Sch 80 x PVC Sch 40 Clear

| Size    | EPDM            | FKM             | Std Pk | Mstr Pk | Prod Code |
|---------|-----------------|-----------------|--------|---------|-----------|
| 1/2X2   | VBA20-B005-G020 | VBA30-B005-G020 | 1      | 0       | 470       |
| 3/4X3   | VBA20-B007-G030 | VBA30-B007-G030 | 1      | 0       | 470       |
| 1X3     | VBA20-B010-G030 | VBA30-B010-G030 | 1      | 0       | 470       |
| 1-1/2X4 | VBA20-B015-G040 | VBA30-B015-G040 | 1      | 0       | 470       |
| 2X4     | VBA20-B020-G040 | VBA30-B020-G040 | 1      | 0       | 470       |

Valve Box, with PVC True Union 2000 Industrial Ball Valve  
 PVC Sch 80 x PVC Sch 80

| Size    | EPDM            | FKM             | Std Pk | Mstr Pk | Prod Code |
|---------|-----------------|-----------------|--------|---------|-----------|
| 1/2X2   | VBA20-B005-B020 | VBA30-B005-B020 | 1      | 0       | 470       |
| 3/4X3   | VBA20-B007-B030 | VBA30-B007-B030 | 1      | 0       | 470       |
| 1X3     | VBA20-B010-B030 | VBA30-B010-B030 | 1      | 0       | 470       |
| 1-1/2X4 | VBA20-B015-B040 | VBA30-B015-B040 | 1      | 0       | 470       |
| 2X4     | VBA20-B020-B040 | VBA30-B020-B040 | 1      | 0       | 470       |

Valve Box, with CPVC True Union 2000 Industrial Ball Valve  
 CPVC Sch 80 x PVC Sch 40

| Size    | EPDM            | FKM             | Std Pk | Mstr Pk | Prod Code |
|---------|-----------------|-----------------|--------|---------|-----------|
| 1/2X2   | VBA20-C005-A020 | VBA30-C005-A020 | 1      | 0       | 470       |
| 3/4X3   | VBA20-C007-A030 | VBA30-C007-A030 | 1      | 0       | 470       |
| 1X3     | VBA20-C010-A030 | VBA30-C010-A030 | 1      | 0       | 470       |
| 1-1/2X4 | VBA20-C015-A040 | VBA30-C015-A040 | 1      | 0       | 470       |
| 2X4     | VBA20-C020-A040 | VBA30-C020-A040 | 1      | 0       | 470       |

Valve Box, with CPVC True Union 2000 Industrial Ball Valve  
 CPVC Sch 80 x PVC Sch 80

| Size    | EPDM            | FKM             | Std Pk | Mstr Pk | Prod Code |
|---------|-----------------|-----------------|--------|---------|-----------|
| 1/2X2   | VBA20-C005-B020 | VBA30-C005-B020 | 1      | 0       | 470       |
| 3/4X3   | VBA20-C007-B030 | VBA30-C007-B030 | 1      | 5       | 470       |
| 1X3     | VBA20-C010-B030 | VBA30-C010-B030 | 1      | 4       | 470       |
| 1-1/2X4 | VBA20-C015-B040 | VBA30-C015-B040 | 1      | 3       | 470       |
| 2X4     | VBA20-C020-B040 | VBA30-C020-B040 | 1      | 0       | 470       |

Valve Box, with CPVC True Union 2000 Industrial Ball Valve  
 CPVC Sch 80 x CPVC Sch 80

| Size    | EPDM            | FKM             | Std Pk | Mstr Pk | Prod Code |
|---------|-----------------|-----------------|--------|---------|-----------|
| 1/2X2   | VBA20-C005-C020 | VBA30-C005-C020 | 1      | 0       | 470       |
| 3/4X3   | VBA20-C007-C030 | VBA30-C007-C030 | 1      | 0       | 470       |
| 1X3     | VBA20-C010-C030 | VBA30-C010-C030 | 1      | 0       | 470       |
| 1-1/2X4 | VBA20-C015-C040 | VBA30-C015-C040 | 1      | 3       | 470       |
| 2X4     | VBA20-C020-C040 | VBA30-C020-C040 | 1      | 0       | 470       |

Valve Box, with CPVC True Union 2000 Industrial Ball Valve  
 CPVC Sch 80 x PVC Sch 40 Clear

| Size    | EPDM            | FKM             | Std Pk | Mstr Pk | Prod Code |
|---------|-----------------|-----------------|--------|---------|-----------|
| 1/2X2   | VBA20-C005-G020 | VBA30-C005-G020 | 1      | 4       | 470       |
| 3/4X3   | VBA20-C007-G030 | VBA30-C007-G030 | 1      | 0       | 470       |
| 1X3     | VBA20-C010-G030 | VBA30-C010-G030 | 1      | 0       | 470       |
| 1-1/2X4 | VBA20-C015-G040 | VBA30-C015-G040 | 1      | 0       | 470       |
| 2X4     | VBA20-C020-G040 | VBA30-C020-G040 | 1      | 0       | 470       |

**Ball Check Valve Box With Valve**



DC Ball Check Valve Boxes are made from a standard Spears® Tee fitting in designated material and Schedule selected, which is fitted with Carrier pipe size Ball Valve and bushed to specified Containment size. Includes Containment Valve Box fitting with threaded Access Plug, True Union 2000 Industrial Ball Check Valve

Double Containment Design & Installation Guide for proper installation.

**General Installation Information:** Ball check valves may be installed in either horizontal or vertical position. A minimum of ten (10) pipe diameters' distance maintained from any pump or other source of turbulence. Check valves MUST be installed with the valve's FLOW arrow pointing in the direction of flow. While Valve Boxes include Centralizers for valve, additional Centralizers are used inside the Containment piping system installed on Carrier pipe and must be ordered separately according to same Carrier x Containment size and pipe schedule selected.

True Union 2000 Industrial Ball Check Valve Specifications, Sizes 1/2" - 2":

|            |                                  |                                       |
|------------|----------------------------------|---------------------------------------|
| Material:  | PVC/CPVC                         | Maximum Service Temperature           |
| Seats:     | PTFE                             | PVC = 140°F (60°C)                    |
| Seals:     | EPDM/FKM                         | CPVC = 200°F (93°C)                   |
| PR, Water: | 235 psi @ 73°F (23°C), 1/2" - 2" | Temperature/Pressure De-ratings Apply |

All Valves assembled with Silicone-Free, Water Soluble Lubricant

Valve Box, with PVC True Union 2000 Industrial Ball Check Valve  
 PVC Sch 40 x PVC Sch 40

| Size  | EPDM           | FKM            | Std Pk | Mstr Pk | Prod Code |
|-------|----------------|----------------|--------|---------|-----------|
| 1/2X2 | VBC2-A005-A020 | VBC3-A005-A020 | 1      | 4       | 470       |



**Double Containment Product**  
**Ball Check Valve Box With Valve**

**Ball Check Valve Box With Valve**

**Valve Box, with PVC True Union 2000 Industrial Ball Check Valve**  
**PVC Sch 40 x PVC Sch 40 (continued)**

| Size           | EPDM           | FKM            | Std Pk | Mstr Pk | Prod Code |
|----------------|----------------|----------------|--------|---------|-----------|
| <b>3/4X3</b>   | VBC2-A007-A030 | VBC3-A007-A030 | 1      | 4       | 470       |
| <b>1X3</b>     | VBC2-A010-A030 | VBC3-A010-A030 | 1      | 0       | 470       |
| <b>1-1/2X4</b> | VBC2-A015-A040 | VBC3-A015-A040 | 1      | 3       | 470       |
| <b>2X4</b>     | VBC2-A020-A040 | VBC3-A020-A040 | 1      | 3       | 470       |

**Valve Box, with PVC True Union 2000 Industrial Ball Check Valve**  
**PVC Sch 40 x PVC Sch 40 Clear**

| Size           | EPDM           | FKM            | Std Pk | Mstr Pk | Prod Code |
|----------------|----------------|----------------|--------|---------|-----------|
| <b>1/2X2</b>   | VBC2-A005-G020 | VBC3-A005-G020 | 1      | 0       | 470       |
| <b>3/4X3</b>   | VBC2-A007-G030 | VBC3-A007-G030 | 1      | 4       | 470       |
| <b>1X3</b>     | VBC2-A010-G030 | VBC3-A010-G030 | 1      | 3       | 470       |
| <b>1-1/2X4</b> | VBC2-A015-G040 | VBC3-A015-G040 | 1      | 3       | 470       |
| <b>2X4</b>     | VBC2-A020-G040 | VBC3-A020-G040 | 1      | 3       | 470       |

**Valve Box, with PVC True Union 2000 Industrial Ball Check Valve**  
**PVC Sch 80 x PVC Sch 40**

| Size           | EPDM           | FKM            | Std Pk | Mstr Pk | Prod Code |
|----------------|----------------|----------------|--------|---------|-----------|
| <b>1/2X2</b>   | VBC2-B005-A020 | VBC3-B005-A020 | 1      | 4       | 470       |
| <b>3/4X3</b>   | VBC2-B007-A030 | VBC3-B007-A030 | 1      | 4       | 470       |
| <b>1X3</b>     | VBC2-B010-A030 | VBC3-B010-A030 | 1      | 3       | 470       |
| <b>1-1/2X4</b> | VBC2-B015-A040 | VBC3-B015-A040 | 1      | 3       | 470       |
| <b>2X4</b>     | VBC2-B020-A040 | VBC3-B020-A040 | 1      | 3       | 470       |

**Valve Box, with PVC True Union 2000 Industrial Ball Check Valve**  
**PVC Sch 80 x PVC Sch 40 Clear**

| Size           | EPDM           | FKM            | Std Pk | Mstr Pk | Prod Code |
|----------------|----------------|----------------|--------|---------|-----------|
| <b>1/2X2</b>   | VBC2-B005-G020 | VBC3-B005-G020 | 1      | 0       | 470       |
| <b>3/4X3</b>   | VBC2-B007-G030 | VBC3-B007-G030 | 1      | 4       | 470       |
| <b>1X3</b>     | VBC2-B010-G030 | VBC3-B010-G030 | 1      | 3       | 470       |
| <b>1-1/2X4</b> | VBC2-B015-G040 | VBC3-B015-G040 | 1      | 3       | 470       |
| <b>2X4</b>     | VBC2-B020-G040 | VBC3-B020-G040 | 1      | 0       | 470       |

**Valve Box, with PVC True Union 2000 Industrial Ball Check Valve**  
**PVC Sch 80 x PVC Sch 80**

| Size           | EPDM           | FKM            | Std Pk | Mstr Pk | Prod Code |
|----------------|----------------|----------------|--------|---------|-----------|
| <b>1/2X2</b>   | VBC2-B005-B020 | VBC3-B005-B020 | 1      | 0       | 470       |
| <b>3/4X3</b>   | VBC2-B007-B030 | VBC3-B007-B030 | 1      | 4       | 470       |
| <b>1X3</b>     | VBC2-B010-B030 | VBC3-B010-B030 | 1      | 3       | 470       |
| <b>1-1/2X4</b> | VBC2-B015-B040 | VBC3-B015-B040 | 1      | 3       | 470       |
| <b>2X4</b>     | VBC2-B020-B040 | VBC3-B020-B040 | 1      | 0       | 470       |

**Valve Box, with CPVC True Union 2000 Industrial Ball Check Valve**

**CPVC Sch 80 x PVC Sch 40**

| Size         | EPDM           | FKM            | Std Pk | Mstr Pk | Prod Code |
|--------------|----------------|----------------|--------|---------|-----------|
| <b>1/2X2</b> | VBC2-C005-A020 | VBC3-C005-A020 | 1      | 4       | 470       |

**Valve Box, with CPVC True Union 2000 Industrial Ball Check Valve**

**CPVC Sch 80 x PVC Sch 40 (continued)**

| Size           | EPDM           | FKM            | Std Pk | Mstr Pk | Prod Code |
|----------------|----------------|----------------|--------|---------|-----------|
| <b>3/4X3</b>   | VBC2-C007-A030 | VBC3-C007-A030 | 1      | 0       | 470       |
| <b>1X3</b>     | VBC2-C010-A030 | VBC3-C010-A030 | 1      | 0       | 470       |
| <b>1-1/2X4</b> | VBC2-C015-A040 | VBC3-C015-A040 | 1      | 0       | 470       |
| <b>2X4</b>     | VBC2-C020-A040 | VBC3-C020-A040 | 1      | 0       | 470       |

**Valve Box, with CPVC True Union 2000 Industrial Ball Check Valve**

**CPVC Sch 80 x PVC Sch 80**

| Size           | EPDM           | FKM            | Std Pk | Mstr Pk | Prod Code |
|----------------|----------------|----------------|--------|---------|-----------|
| <b>1/2X2</b>   | VBC2-C005-B020 | VBC3-C005-B020 | 1      | 4       | 470       |
| <b>3/4X3</b>   | VBC2-C007-B030 | VBC3-C007-B030 | 1      | 4       | 470       |
| <b>1X3</b>     | VBC2-C010-B030 | VBC3-C010-B030 | 1      | 3       | 470       |
| <b>1-1/2X4</b> | VBC2-C015-B040 | VBC3-C015-B040 | 1      | 3       | 470       |
| <b>2X4</b>     | VBC2-C020-B040 | VBC3-C020-B040 | 1      | 0       | 470       |

**Valve Box, with CPVC True Union 2000 Industrial Ball Check Valve**

**CPVC Sch 80 x CPVC Sch 80**

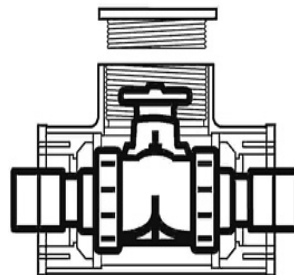
| Size           | EPDM           | FKM            | Std Pk | Mstr Pk | Prod Code |
|----------------|----------------|----------------|--------|---------|-----------|
| <b>1/2X2</b>   | VBC2-C005-C020 | VBC3-C005-C020 | 1      | 0       | 470       |
| <b>3/4X3</b>   | VBC2-C007-C030 | VBC3-C007-C030 | 1      | 0       | 470       |
| <b>1X3</b>     | VBC2-C010-C030 | VBC3-C010-C030 | 1      | 4       | 470       |
| <b>1-1/2X4</b> | VBC2-C015-C040 | VBC3-C015-C040 | 1      | 3       | 470       |
| <b>2X4</b>     | VBC2-C020-C040 | VBC3-C020-C040 | 1      | 3       | 470       |

**Valve Box, with CPVC True Union 2000 Industrial Ball Check Valve**

**CPVC Sch 80 x PVC Sch 40 Clear**

| Size           | EPDM           | FKM            | Std Pk | Mstr Pk | Prod Code |
|----------------|----------------|----------------|--------|---------|-----------|
| <b>1/2X2</b>   | VBC2-C005-G020 | VBC3-C005-G020 | 1      | 4       | 470       |
| <b>3/4X3</b>   | VBC2-C007-G030 | VBC3-C007-G030 | 1      | 4       | 470       |
| <b>1X3</b>     | VBC2-C010-G030 | VBC3-C010-G030 | 1      | 3       | 470       |
| <b>1-1/2X4</b> | VBC2-C015-G040 | VBC3-C015-G040 | 1      | 4       | 470       |
| <b>2X4</b>     | VBC2-C020-G040 | VBC3-C020-G040 | 1      | 4       | 470       |

**Diaphragm Valve Box With Valve**



## Double Containment Product Diaphragm Valve Box With Valve



### Diaphragm Valve Box With Valve

DC Diaphragm Valve Boxes are made from a standard Spears® Tee fitting in designated material and Schedule selected, which is fitted with Carrier pipe size Diaphragm Valve and bushed to specified Containment size. Includes Containment Valve Box fitting with threaded Access Plug, True Union Diaphragm Valve and Centralizers for positioning valve in box. Carrier valves are equipped with extenders to facilitate cement assembly. See *Double Containment Design & Installation Guide* for proper installation.

**General Installation Information:** Ball check valves may be installed in either horizontal or vertical position. A minimum of ten (10) pipe diameters' distance maintained from any pump or other source of turbulence. Check valves MUST be installed with the valve's FLOW arrow pointing in the direction of flow. While Valve Boxes include Centralizers for valve, additional Centralizers are used inside the Containment piping system installed on Carrier pipe and must be ordered separately according to same Carrier x Containment size and pipe schedule selected.

True Union Diaphragm Valve Specifications, Sizes 1/2" - 2":

|            |                                  |                             |
|------------|----------------------------------|-----------------------------|
| Material:  | PVC/CPVC                         | Maximum Service Temperature |
| Seals:     | EPDM/FKM                         | PVC = 140°F (60°C)          |
|            |                                  | CPVC = 200°F (93°C)         |
| PR, Water: | 235 psi @ 73°F (23°C), 1/2" - 2" | Temperature/Pressure        |
|            |                                  | De-ratings Apply            |

All Valves assembled with Silicone-Free, Water Soluble Lubricant

### Valve Box, with PVC True Union Diaphragm Valve PVC Sch 40 x PVC Sch 40

| Size    | EPDM            | FKM             | Std Pk | Mstr Pk | Prod Code |
|---------|-----------------|-----------------|--------|---------|-----------|
| 1/2X2   | VBD20-A005-A020 | VBD30-A005-A020 | 1      | 0       | 470       |
| 3/4X3   | VBD20-A007-A030 | VBD30-A007-A030 | 1      | 0       | 470       |
| 1X3     | VBD20-A010-A030 | VBD30-A010-A030 | 1      | 0       | 470       |
| 1-1/2X4 | VBD20-A015-A040 | VBD30-A015-A040 | 1      | 0       | 470       |
| 2X4     | VBD20-A020-A040 | VBD30-A020-A040 | 1      | 0       | 470       |

### Valve Box, with PVC True Union Diaphragm Valve PVC Sch 40 x PVC Sch 40 Clear

| Size    | EPDM            | FKM             | Std Pk | Mstr Pk | Prod Code |
|---------|-----------------|-----------------|--------|---------|-----------|
| 1/2X2   | VBD20-A005-G020 | VBD30-A005-G020 | 1      | 0       | 470       |
| 3/4X3   | VBD20-A007-G030 | VBD30-A007-G030 | 1      | 0       | 470       |
| 1X3     | VBD20-A010-G030 | VBD30-A010-G030 | 1      | 0       | 470       |
| 1-1/2X4 | VBD20-A015-G040 | VBD30-A015-G040 | 1      | 0       | 470       |
| 2X4     | VBD20-A020-G040 | VBD30-A020-G040 | 1      | 0       | 470       |

### Valve Box, with PVC True Union Diaphragm Valve PVC Sch 80 x PVC Sch 40

| Size    | EPDM            | FKM             | Std Pk | Mstr Pk | Prod Code |
|---------|-----------------|-----------------|--------|---------|-----------|
| 1/2X2   | VBD20-B005-A020 | VBD30-B005-A020 | 1      | 0       | 470       |
| 3/4X3   | VBD20-B007-A030 | VBD30-B007-A030 | 1      | 0       | 470       |
| 1X3     | VBD20-B010-A030 | VBD30-B010-A030 | 1      | 0       | 470       |
| 1-1/2X4 | VBD20-B015-A040 | VBD30-B015-A040 | 1      | 0       | 470       |
| 2X4     | VBD20-B020-A040 | VBD30-B020-A040 | 1      | 0       | 470       |

### Valve Box, with PVC True Union Diaphragm Valve PVC Sch 80 x PVC Sch 40 Clear

| Size    | EPDM            | FKM             | Std Pk | Mstr Pk | Prod Code |
|---------|-----------------|-----------------|--------|---------|-----------|
| 1/2X2   | VBD20-B005-G020 | VBD30-B005-G020 | 1      | 0       | 470       |
| 3/4X3   | VBD20-B007-G030 | VBD30-B007-G030 | 1      | 0       | 470       |
| 1X3     | VBD20-B010-G030 | VBD30-B010-G030 | 1      | 0       | 470       |
| 1-1/2X4 | VBD20-B015-G040 | VBD30-B015-G040 | 1      | 0       | 470       |
| 2X4     | VBD20-B020-G040 | VBD30-B020-G040 | 1      | 0       | 470       |

### Valve Box, with PVC True Union Diaphragm Valve PVC Sch 80 x PVC Sch 80

| Size    | EPDM            | FKM             | Std Pk | Mstr Pk | Prod Code |
|---------|-----------------|-----------------|--------|---------|-----------|
| 1/2X2   | VBD20-B005-B020 | VBD30-B005-B020 | 1      | 0       | 470       |
| 3/4X3   | VBD20-B007-B030 | VBD30-B007-B030 | 1      | 0       | 470       |
| 1X3     | VBD20-B010-B030 | VBD30-B010-B030 | 1      | 0       | 470       |
| 1-1/2X4 | VBD20-B015-B040 | VBD30-B015-B040 | 1      | 0       | 470       |
| 2X4     | VBD20-B020-B040 | VBD30-B020-B040 | 1      | 0       | 470       |

### Valve Box, with CPVC True Union Diaphragm Valve CPVC Sch 80 x PVC Sch 40

| Size    | EPDM            | FKM             | Std Pk | Mstr Pk | Prod Code |
|---------|-----------------|-----------------|--------|---------|-----------|
| 1/2X2   | VBD20-C005-A020 | VBD30-C005-A020 | 1      | 0       | 470       |
| 3/4X3   | VBD20-C007-A030 | VBD30-C007-A030 | 1      | 0       | 470       |
| 1X3     | VBD20-C010-A030 | VBD30-C010-A030 | 1      | 0       | 470       |
| 1-1/2X4 | VBD20-C015-A040 | VBD30-C015-A040 | 1      | 0       | 470       |
| 2X4     | VBD20-C020-A040 | VBD30-C020-A040 | 1      | 0       | 470       |

### Valve Box, with CPVC True Union Diaphragm Valve CPVC Sch 80 x PVC Sch 80

| Size    | EPDM            | FKM             | Std Pk | Mstr Pk | Prod Code |
|---------|-----------------|-----------------|--------|---------|-----------|
| 1/2X2   | VBD20-C005-B020 | VBD30-C005-B020 | 1      | 5       | 470       |
| 3/4X3   | VBD20-C007-B030 | VBD30-C007-B030 | 1      | 6       | 470       |
| 1X3     | VBD20-C010-B030 | VBD30-C010-B030 | 1      | 6       | 470       |
| 1-1/2X4 | VBD20-C015-B040 | VBD30-C015-B040 | 1      | 4       | 470       |
| 2X4     | VBD20-C020-B040 | VBD30-C020-B040 | 1      | 0       | 470       |

### Valve Box, with CPVC True Union Diaphragm Valve CPVC Sch 80 x CPVC Sch 80

| Size    | EPDM            | FKM             | Std Pk | Mstr Pk | Prod Code |
|---------|-----------------|-----------------|--------|---------|-----------|
| 1/2X2   | VBD20-C005-C020 | VBD30-C005-C020 | 1      | 0       | 470       |
| 3/4X3   | VBD20-C007-C030 | VBD30-C007-C030 | 1      | 0       | 470       |
| 1X3     | VBD20-C010-C030 | VBD30-C010-C030 | 1      | 0       | 470       |
| 1-1/2X4 | VBD20-C015-C040 | VBD30-C015-C040 | 1      | 0       | 470       |
| 2X4     | VBD20-C020-C040 | VBD30-C020-C040 | 1      | 0       | 470       |

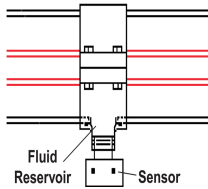
### Valve Box, with CPVC True Union Diaphragm Valve CPVC Sch 80 x PVC Sch 40 Clear

| Size    | EPDM            | FKM             | Std Pk | Mstr Pk | Prod Code |
|---------|-----------------|-----------------|--------|---------|-----------|
| 1/2X2   | VBD20-C005-G020 | VBD30-C005-G020 | 1      | 0       | 470       |
| 3/4X3   | VBD20-C007-G030 | VBD30-C007-G030 | 1      | 0       | 470       |
| 1X3     | VBD20-C010-G030 | VBD30-C010-G030 | 1      | 0       | 470       |
| 1-1/2X4 | VBD20-C015-G040 | VBD30-C015-G040 | 1      | 0       | 470       |
| 2X4     | VBD20-C020-G040 | VBD30-C020-G040 | 1      | 0       | 470       |



## Double Containment Product Clamp-On Saddles for Leak Detection Sensors

### Clamp-On Saddles for Leak Detection Sensors



Leak Detection Sensor Saddles are special devices which can be installed on the Containment system where a "low-point" is desired for leak detection apparatus. Spears® Clamp-on style saddles feature an internal O-ring seal to allow easy installation anywhere on the containment piping. Saddles may also be used in Containment high points for air relief or for connection of Containment drainage valves (see note below). See *Double Containment Design & Installation Guide* for proper installation.

Note: Saddles specified in this catalog are for listed containment pipe sizes through 8", with 1/2" or 3/4" NPT connections. For a wide variety of additional pipe and outlet sizes, including solvent weld outlets, please refer to Spears® *PVC/CPVC Clamp-On & Hot-Tap Saddles*.

Clamp-on Saddle Specifications, Containment sizes 2" - 8":

|            |   |                                       |
|------------|---|---------------------------------------|
| Material:  | PVC/CPVC                                      | Maximum Service Temperature           |
| Seals:     | EPDM/FKM                                      | PVC = 140°F (60°C)                    |
| Hardware:  | Stainless Steel (no fluid contact)            | CPVC = 200°F (93°C)                   |
| Outlet:    | Special Reinforced (SR) Female Plastic thread | Temperature/Pressure De-ratings Apply |
| PR, Water: | 1/2" or 3/4" NPT (see note below)             |                                       |
|            | 235 psi @ 73°F (23°C), 2" - 4"                |                                       |
|            | 200 psi @ 73°F (23°C)                         |                                       |
|            | 150 psi @ 73°F (23°C), 8"                     |                                       |

### PVC White Clamp-On Saddle x SR Thread

| Part Number | Size | Hole Saw Dia | Std Pk | Mstr Ctn | Prod Code |
|-------------|------|--------------|--------|----------|-----------|
|-------------|------|--------------|--------|----------|-----------|

#### with EPDM O-ring Seal & SS Hardware

2"-4" 235, 6" 200, 8"-12" 150 psi @ 73°F (23°C)

|                          |       |       |   |    |     |
|--------------------------|-------|-------|---|----|-----|
| 467SE-247SR              | 2X1/2 | 3/4   | 1 | 10 | 046 |
| 467SE-248SR              | 2X3/4 | 7/8   | 1 | 10 | 046 |
| 467SE-333SR <sup>1</sup> | 3X1/2 | 7/8   | 1 | 10 | 046 |
| 467SE-334SR              | 3X3/4 | 7/8   | 1 | 10 | 046 |
| 467SE-415SR <sup>1</sup> | 4X1/2 | 1-1/8 | 1 | 10 | 046 |
| 467SE-416SR <sup>1</sup> | 4X3/4 | 1-1/8 | 1 | 10 | 046 |
| 467SE-523SR <sup>1</sup> | 6X1/2 | 1-1/8 | 1 | 4  | 046 |
| 467SE-524SR <sup>1</sup> | 6X3/4 | 1-1/8 | 1 | 4  | 046 |
| 467SE-573SR <sup>1</sup> | 8X1/2 | 4     | 1 | 0  | 046 |
| 467SE-574SR <sup>1</sup> | 8X3/4 | 4     | 1 | 0  | 046 |

<sup>1</sup> Outlet Sized with Adapter

PVC White Saddles with FKM O-ring seals available by special order

### PVC Gray Clamp-On Saddle x SR Thread

| Part Number | Size | Hole Saw Dia | Std Pk | Mstr Ctn | Prod Code |
|-------------|------|--------------|--------|----------|-----------|
|-------------|------|--------------|--------|----------|-----------|

#### with EPDM O-ring Seal & SS Hardware

2"-4" 235, 6" 200, 8"-12" 150 psi @ 73°F (23°C)

|            |       |     |   |    |     |
|------------|-------|-----|---|----|-----|
| 867S-247SR | 2X1/2 | 3/4 | 1 | 10 | 086 |
| 867S-248SR | 2X3/4 | 7/8 | 1 | 10 | 086 |

### PVC Gray Clamp-On Saddle x SR Thread (continued)

| Part Number | Size | Hole Saw Dia | Std Pk | Mstr Ctn | Prod Code |
|-------------|------|--------------|--------|----------|-----------|
|-------------|------|--------------|--------|----------|-----------|

#### with EPDM O-ring Seal & SS Hardware

|                         |       |       |   |    |     |
|-------------------------|-------|-------|---|----|-----|
| 867S-333SR <sup>1</sup> | 3X1/2 | 7/8   | 1 | 10 | 086 |
| 867S-334SR              | 3X3/4 | 7/8   | 1 | 10 | 086 |
| 867S-415SR <sup>1</sup> | 4X1/2 | 1-1/8 | 1 | 10 | 086 |
| 867S-416SR <sup>1</sup> | 4X3/4 | 1-1/8 | 1 | 10 | 086 |
| 867S-523SR <sup>1</sup> | 6X1/2 | 1-1/8 | 1 | 4  | 086 |
| 867S-524SR <sup>1</sup> | 6X3/4 | 1-1/8 | 1 | 4  | 086 |
| 867S-573SR <sup>1</sup> | 8X1/2 | 4     | 1 | 0  | 086 |
| 867S-574SR <sup>1</sup> | 8X3/4 | 4     | 1 | 0  | 086 |

<sup>1</sup> Outlet sized with Adapter

| Part Number | Size | Hole Saw Dia | Std Pk | Mstr Ctn | Prod Code |
|-------------|------|--------------|--------|----------|-----------|
|-------------|------|--------------|--------|----------|-----------|

#### with FKM O-ring Seal & SS Hardware

2"-4" 235, 6" 200, 8"-12" 150 psi @ 73°F (23°C)

|                          |       |       |   |    |     |
|--------------------------|-------|-------|---|----|-----|
| 867SV-247SR              | 2X1/2 | 3/4   | 1 | 10 | 086 |
| 867SV-248SR              | 2X3/4 | 7/8   | 1 | 10 | 086 |
| 867SV-333SR <sup>1</sup> | 3X1/2 | 7/8   | 1 | 10 | 086 |
| 867SV-334SR              | 3X3/4 | 7/8   | 1 | 10 | 086 |
| 867SV-415SR <sup>1</sup> | 4X1/2 | 1-1/8 | 1 | 10 | 086 |
| 867SV-416SR <sup>1</sup> | 4X3/4 | 1-1/8 | 1 | 10 | 086 |
| 867SV-523SR <sup>1</sup> | 6X1/2 | 1-1/8 | 1 | 4  | 086 |
| 867SV-524SR <sup>1</sup> | 6X3/4 | 1-1/8 | 1 | 4  | 086 |
| 867SV-573SR <sup>1</sup> | 8X1/2 | 4     | 1 | 0  | 086 |
| 867SV-574SR <sup>1</sup> | 8X3/4 | 4     | 1 | 0  | 086 |

<sup>1</sup> Outlet sized with Adapter

### CPVC Gray Clamp-On Saddle x SR Thread

| Part Number | Size | Hole Saw Dia | Std Pk | Mstr Ctn | Prod Code |
|-------------|------|--------------|--------|----------|-----------|
|-------------|------|--------------|--------|----------|-----------|

#### with EPDM O-ring Seal & SS Hardware

2"-4" 235, 6" 200, 8"-12" 150 psi @ 73°F (23°C)

|                          |       |       |   |    |     |
|--------------------------|-------|-------|---|----|-----|
| 867S-247CSR              | 2X1/2 | 3/4   | 1 | 10 | 096 |
| 867S-248CSR              | 2X3/4 | 7/8   | 1 | 10 | 096 |
| 867S-333CSR <sup>1</sup> | 3X1/2 | 7/8   | 1 | 10 | 096 |
| 867S-334CSR              | 3X3/4 | 7/8   | 1 | 10 | 096 |
| 867S-415CSR <sup>1</sup> | 4X1/2 | 1-1/8 | 1 | 10 | 096 |
| 867S-416CSR <sup>1</sup> | 4X3/4 | 1-1/8 | 1 | 10 | 096 |
| 867S-523CSR <sup>1</sup> | 6X1/2 | 1-1/8 | 1 | 4  | 096 |
| 867S-524CSR <sup>1</sup> | 6X3/4 | 1-1/8 | 1 | 4  | 096 |
| 867S-573CSR              | 8X1/2 | 4     | 1 | 0  | 096 |
| 867S-574CSR <sup>1</sup> | 8X3/4 | 4     | 1 | 0  | 096 |

<sup>1</sup> Outlet sized with Adapter

| Part Number | Size | Hole Saw Dia | Std Pk | Mstr Ctn | Prod Code |
|-------------|------|--------------|--------|----------|-----------|
|-------------|------|--------------|--------|----------|-----------|

#### with FKM O-ring Seal & SS Hardware

2"-4" 235, 6" 200, 8"-12" 150 psi @ 73°F (23°C)

|                           |       |       |   |    |     |
|---------------------------|-------|-------|---|----|-----|
| 867SV-247CSR              | 2X1/2 | 3/4   | 1 | 10 | 096 |
| 867SV-248CSR              | 2X3/4 | 7/8   | 1 | 10 | 096 |
| 867SV-333CSR <sup>1</sup> | 3X1/2 | 7/8   | 1 | 10 | 096 |
| 867SV-334CSR              | 3X3/4 | 7/8   | 1 | 10 | 096 |
| 867SV-415CSR <sup>1</sup> | 4X1/2 | 1-1/8 | 1 | 10 | 096 |
| 867SV-416CSR <sup>1</sup> | 4X3/4 | 1-1/8 | 1 | 10 | 096 |
| 867SV-523CSR <sup>1</sup> | 6X1/2 | 1-1/8 | 1 | 4  | 096 |
| 867SV-524CSR <sup>1</sup> | 6X3/4 | 1-1/8 | 1 | 4  | 096 |
| 867SV-573CSR <sup>1</sup> | 8X1/2 | 4     | 1 | 0  | 096 |
| 867SV-574CSR <sup>1</sup> | 8X3/4 | 4     | 1 | 0  | 096 |

<sup>1</sup> Outlet sized with Adapter